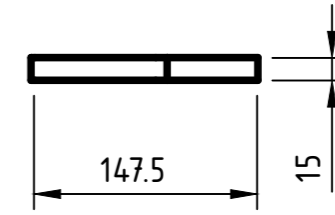
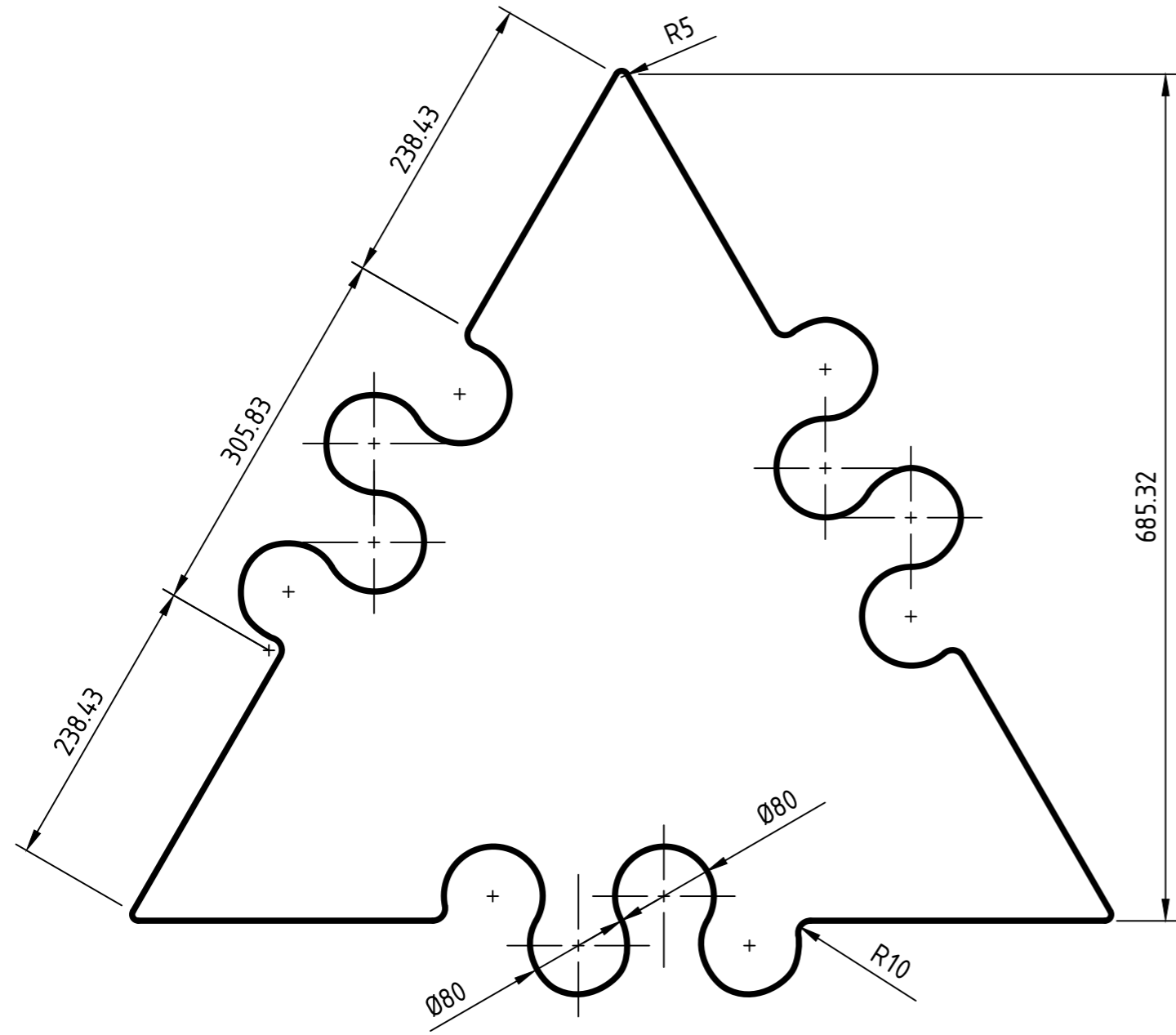
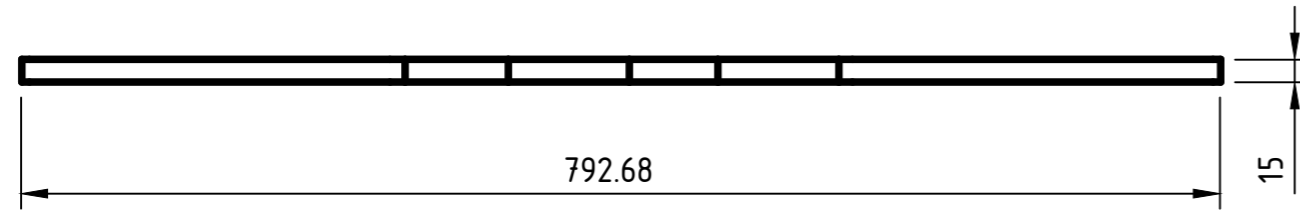
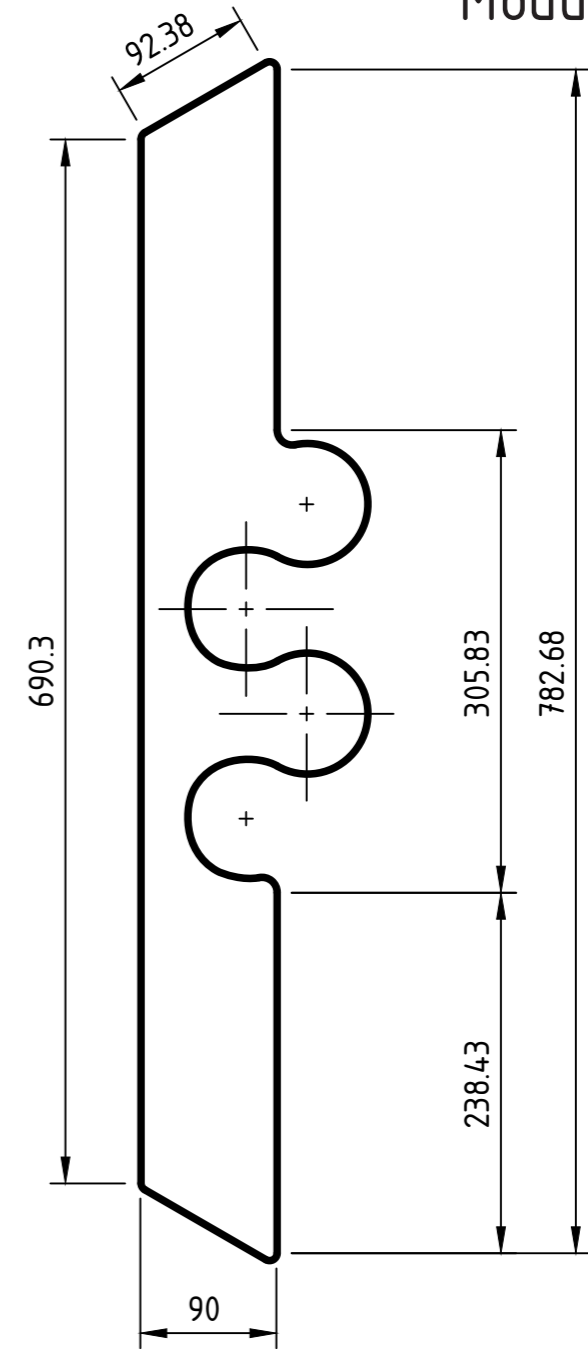


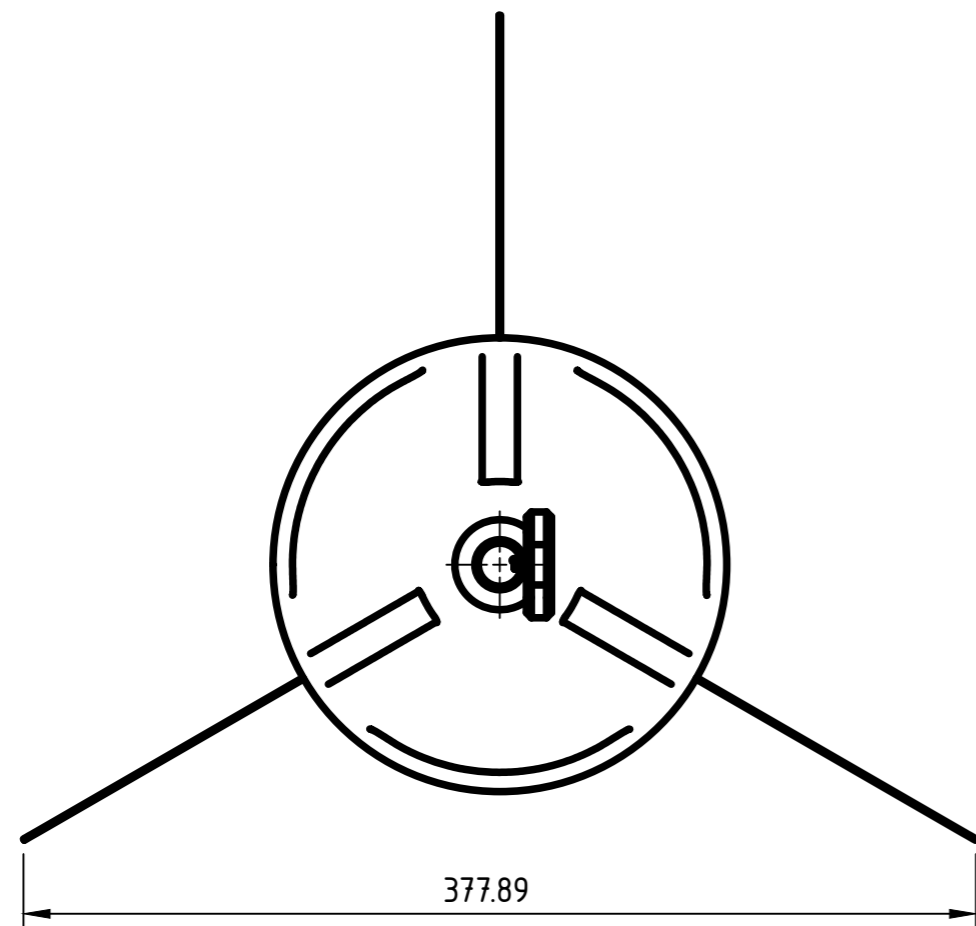
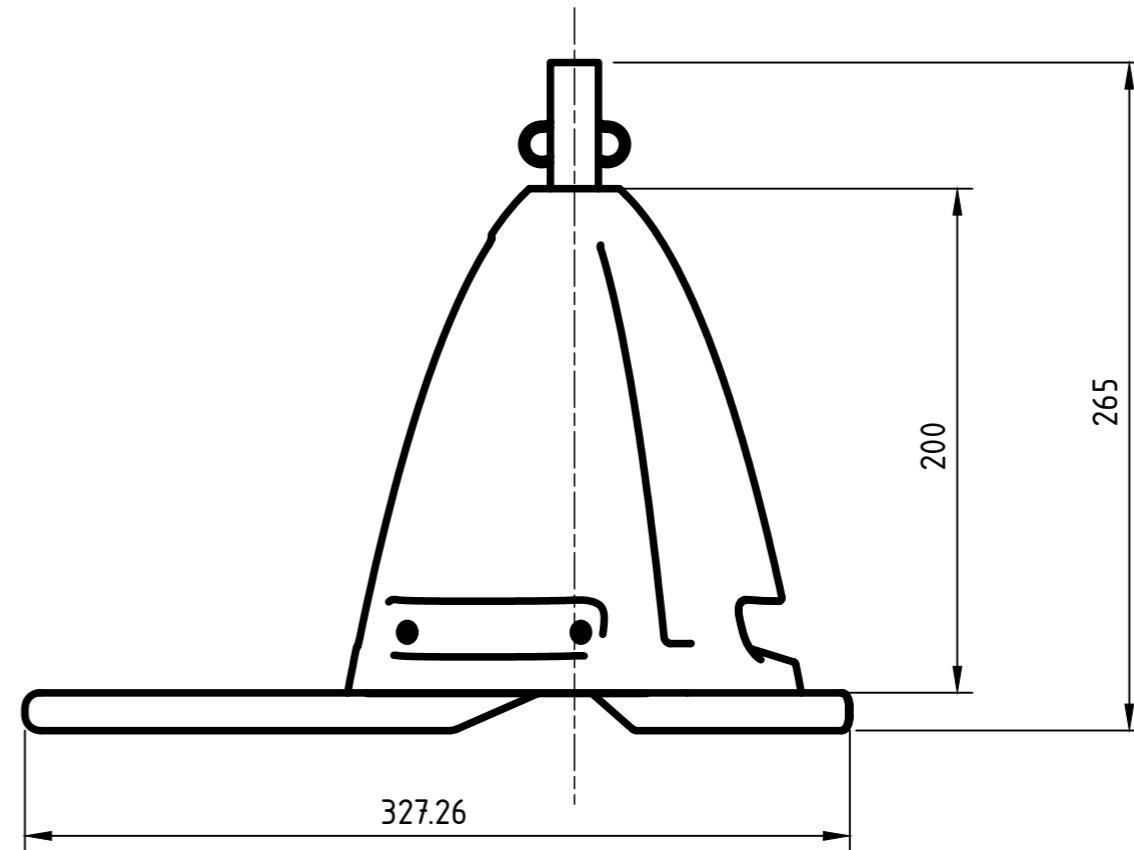
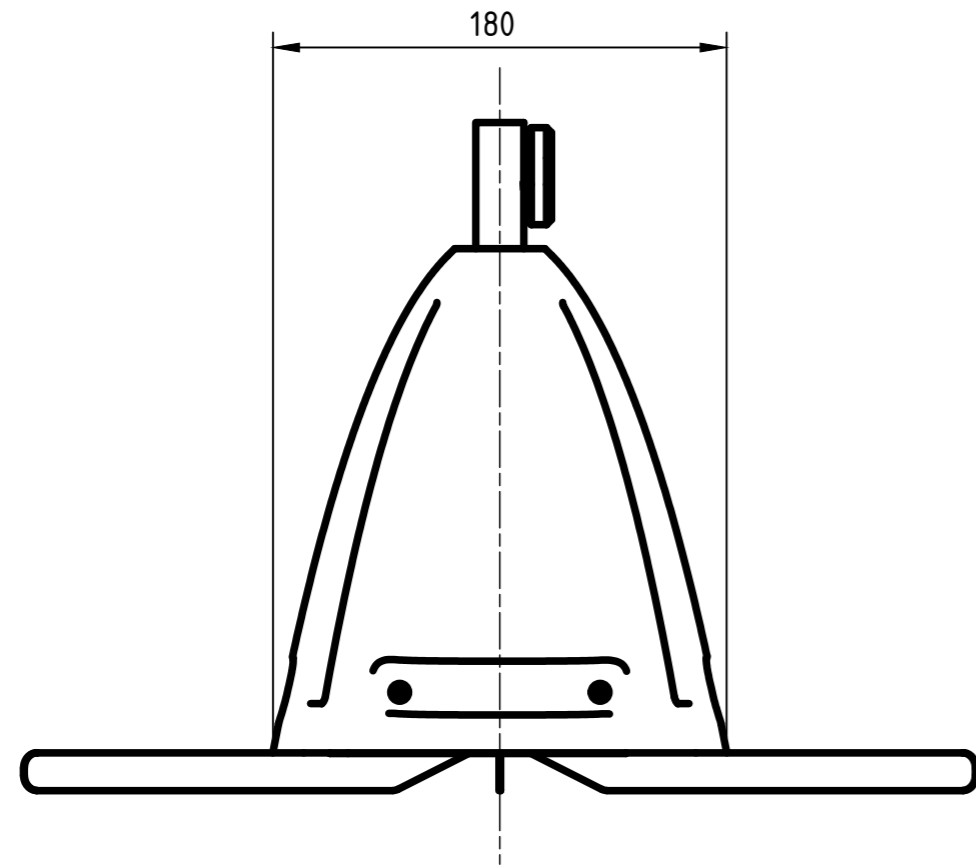
Módulo principal



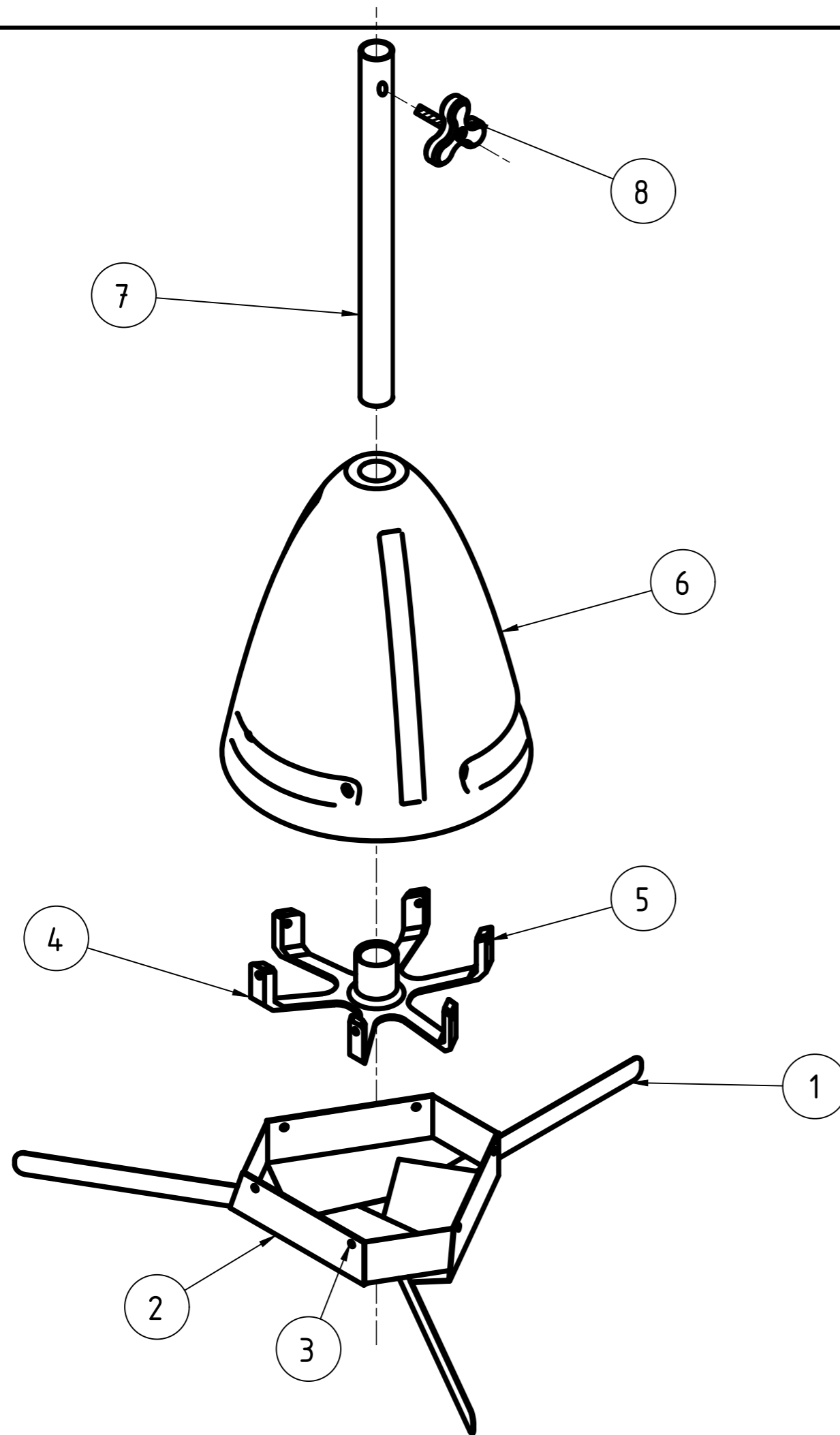
Módulo de borde



Dib.	Fecha	Nombre	Taller de Diseño Industrial IV	
Rev.	3/12			
Apr.				
Esc:1:5			Piso modular encastrable	
Toler. 0,2mm Rug.				

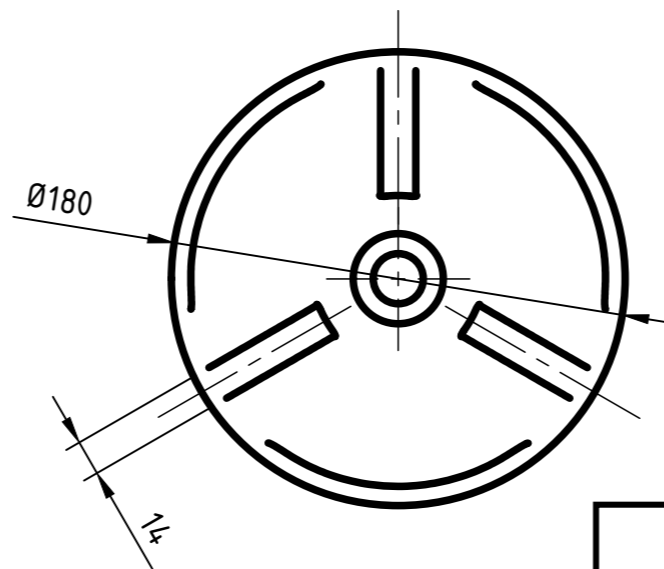
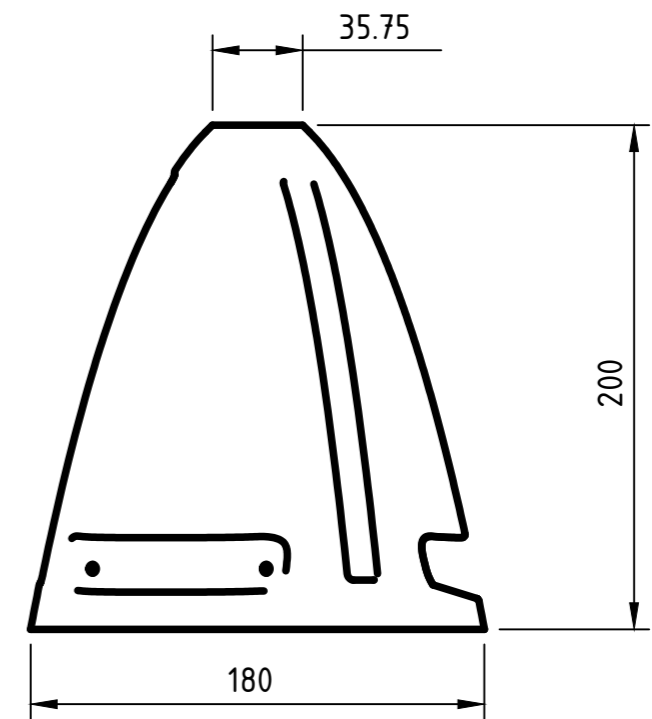
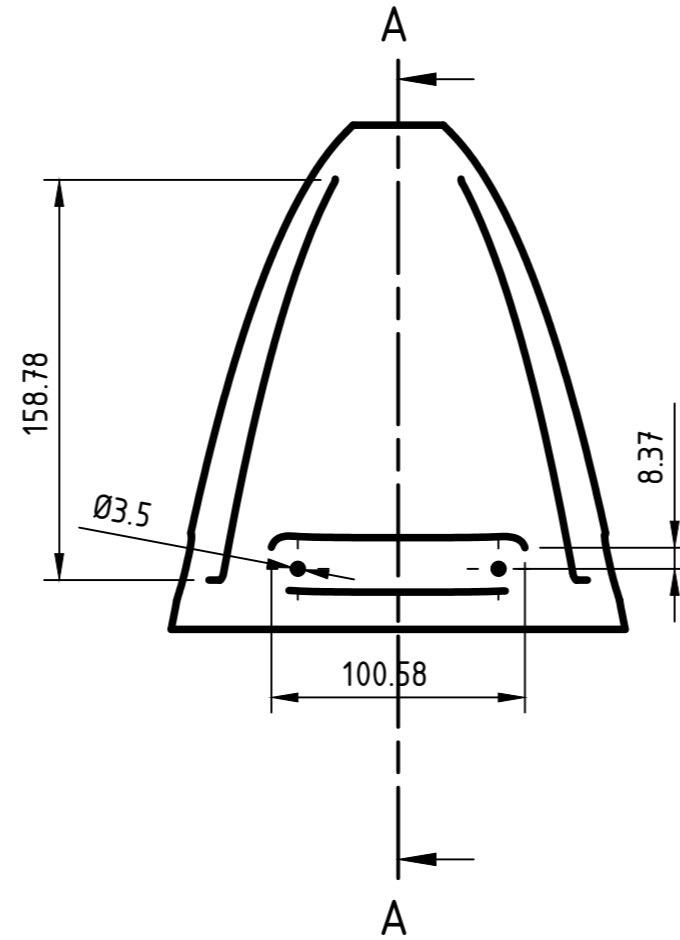
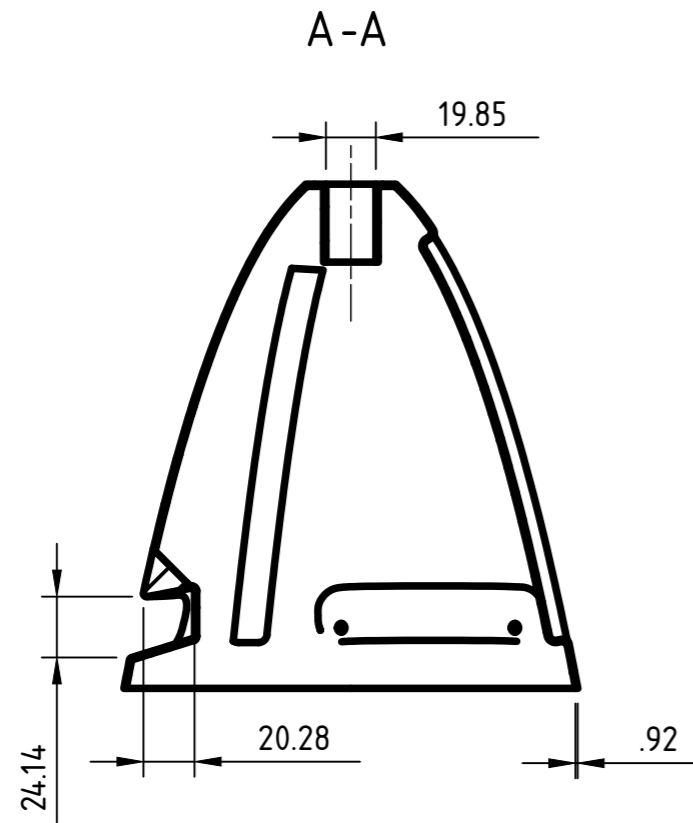


	Fecha	Nombre	Taller de Diseño Industrial IV	 <i>experiencia de juego creativo</i>
Dib.	3/12			
Rev.				
Apr.				
Esc:1:3			Base estructural Dimensiones generales	
				
Toler. Rug.				

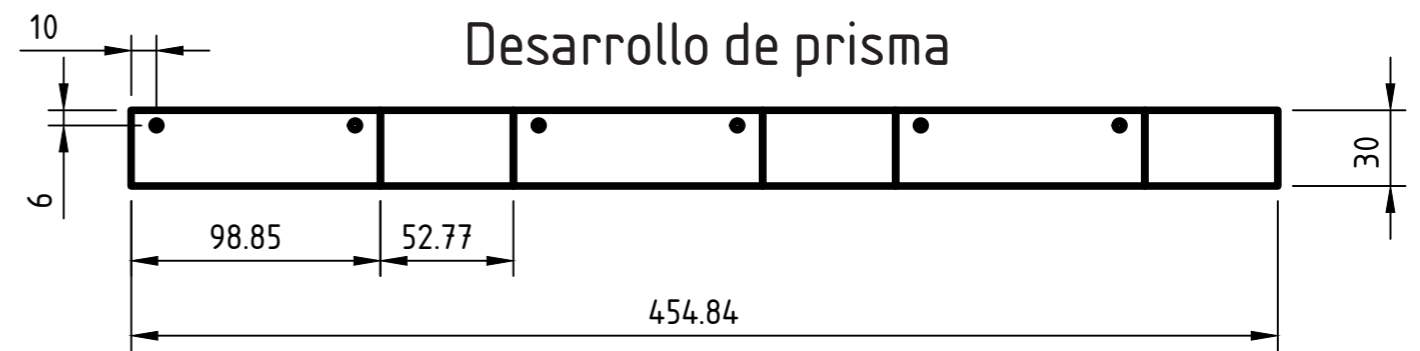
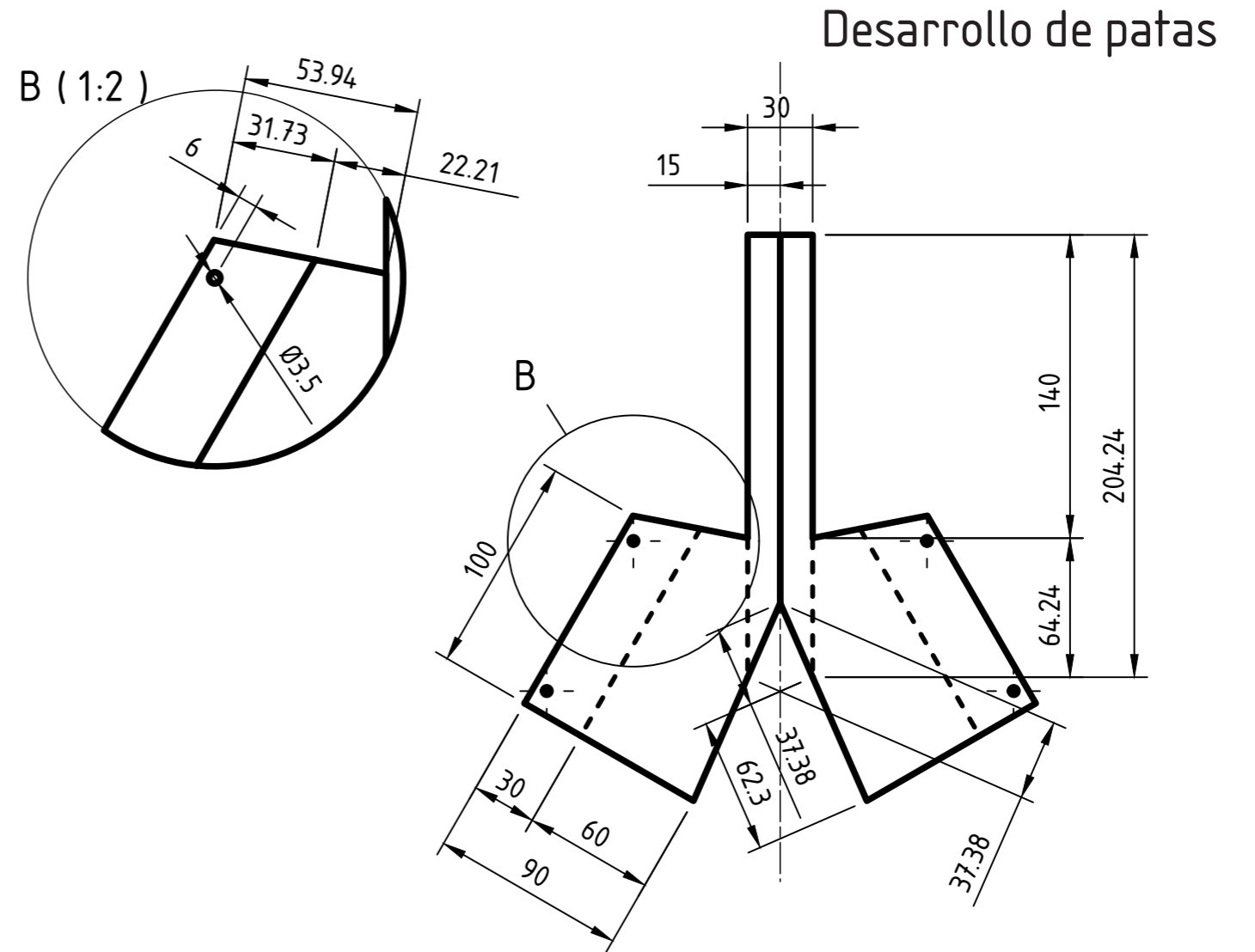
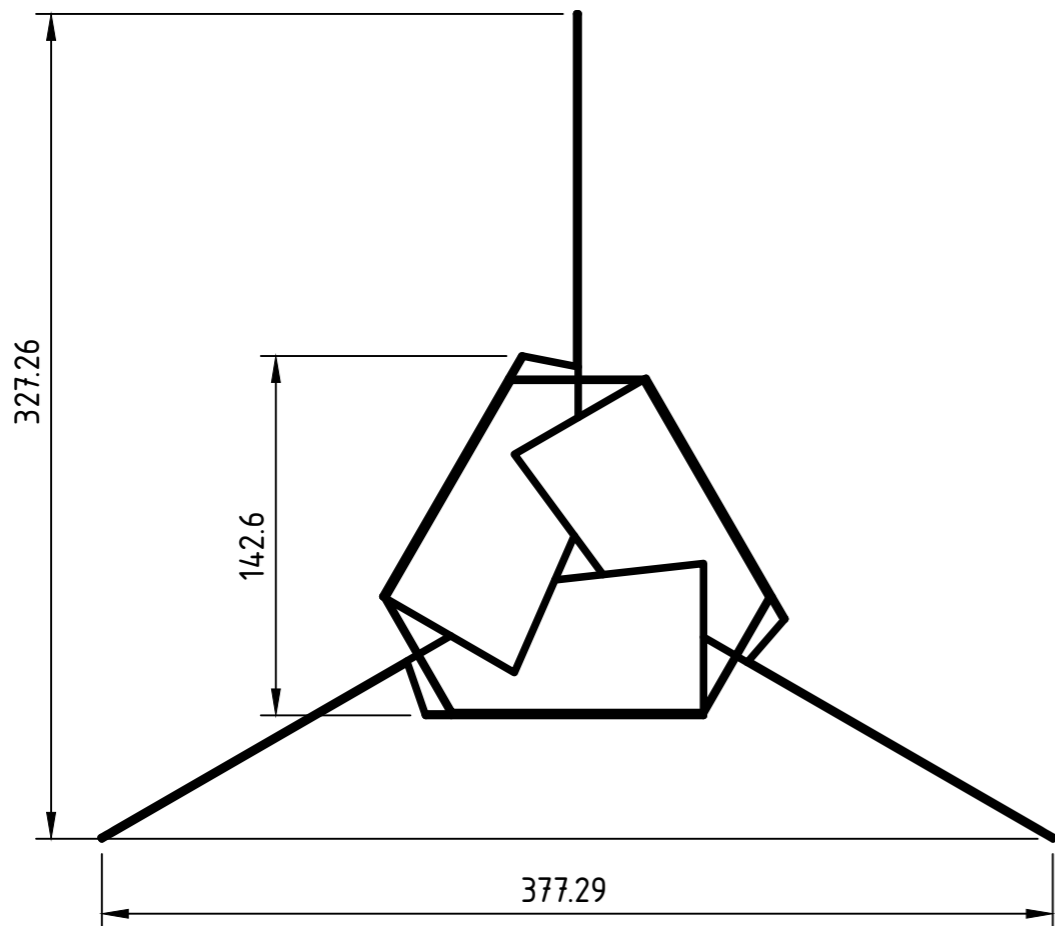
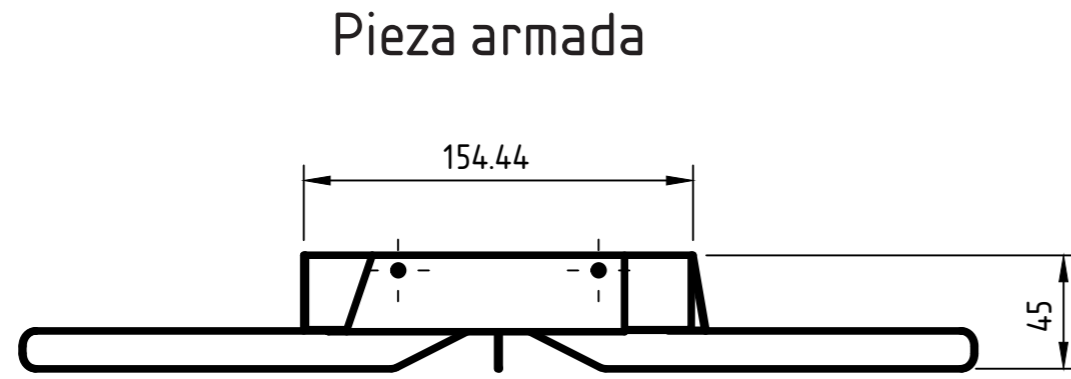


3	Patas metálicas	1	Acero galvanizado N°27	Corte por cizalla
1	Prisma metálico	2	Acero galvanizado N°27	Corte por cizalla
6	Tornillo T 3 x 18, A4t	3	Acero	
1	Pieza araña	4	PLA	Impresión 3D FDM
6	Tuerca M 3	5	Acero	
1	Volumen principal	6	PLA	Impresión 3D FDM
1	Caño metálico	7	Acero galvanizado	Corte y taladrado
1	Mecanismo de ajuste	8	PLA	Impresión 3D FDM
Cant		Ubicación	Material	Proceso

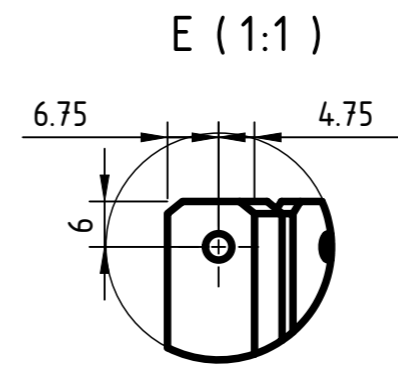
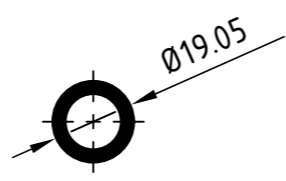
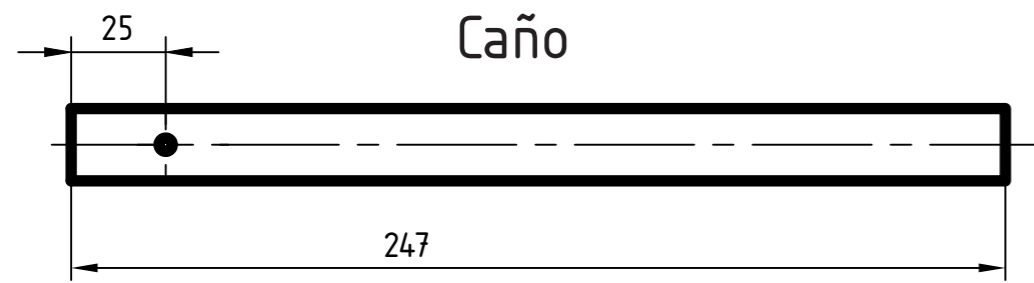
Dib.	Fecha	Nombre	Taller de Diseño Industrial IV	
Rev.	3/12			
Apr.				
Esc: 1:3				
	Base estructural Despiece			



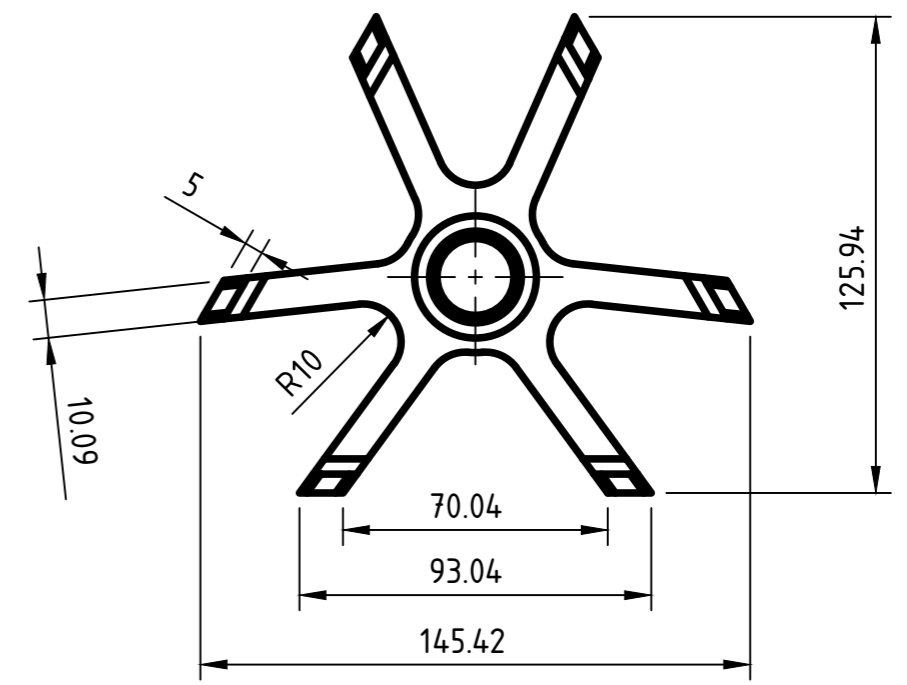
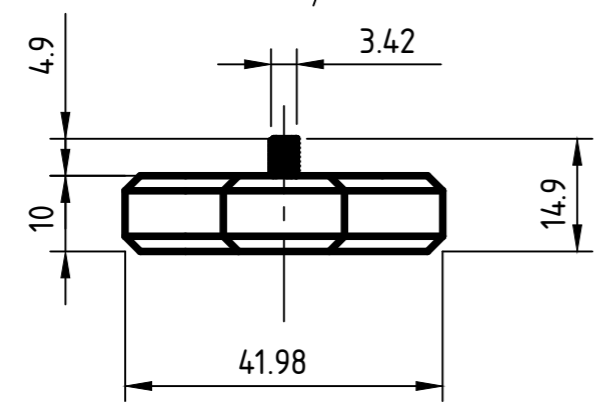
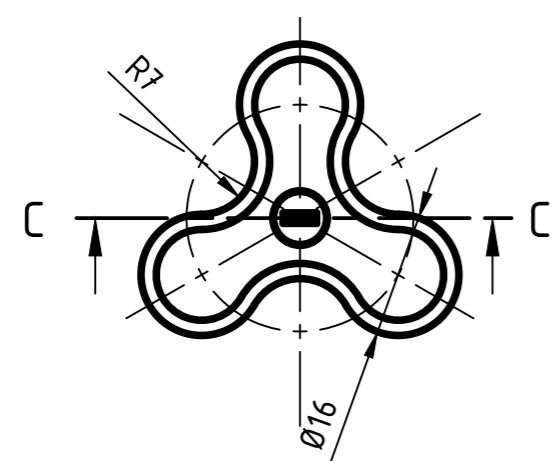
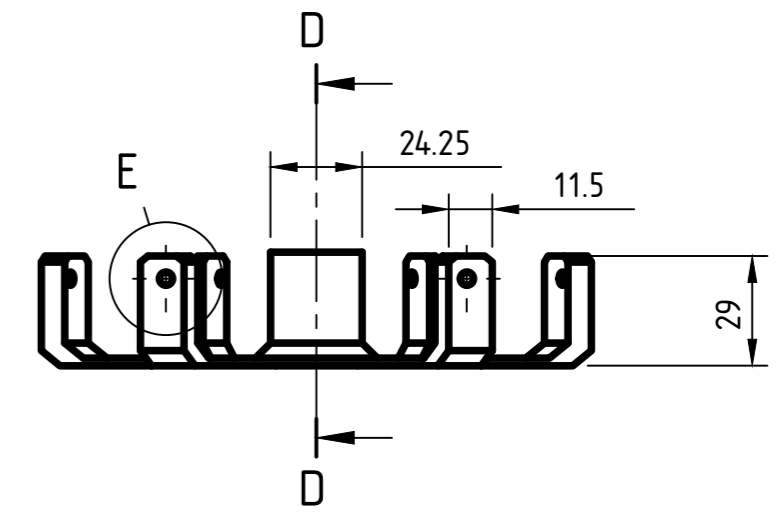
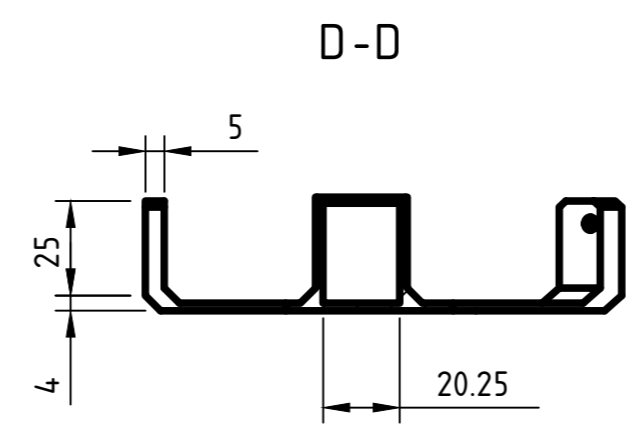
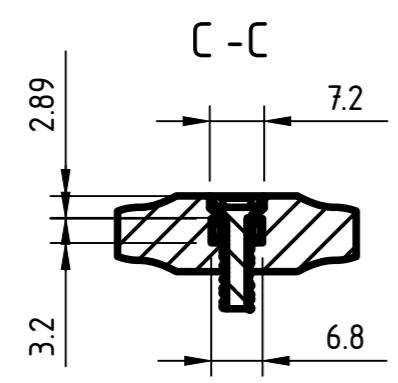
	Fecha	Nombre	Taller de Diseño Industrial IV	 <i>experiencia de juego creativo</i>
Dib.	3/12			
Rev.				
Apr.				
Esc: 1:3	<p>Base estructural</p> <p>Volumen principal</p>			
				
Toler. 0,25mm Rug.				



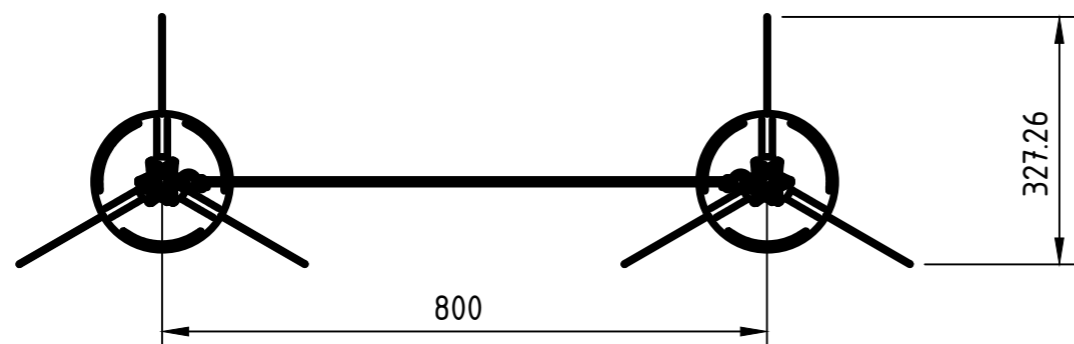
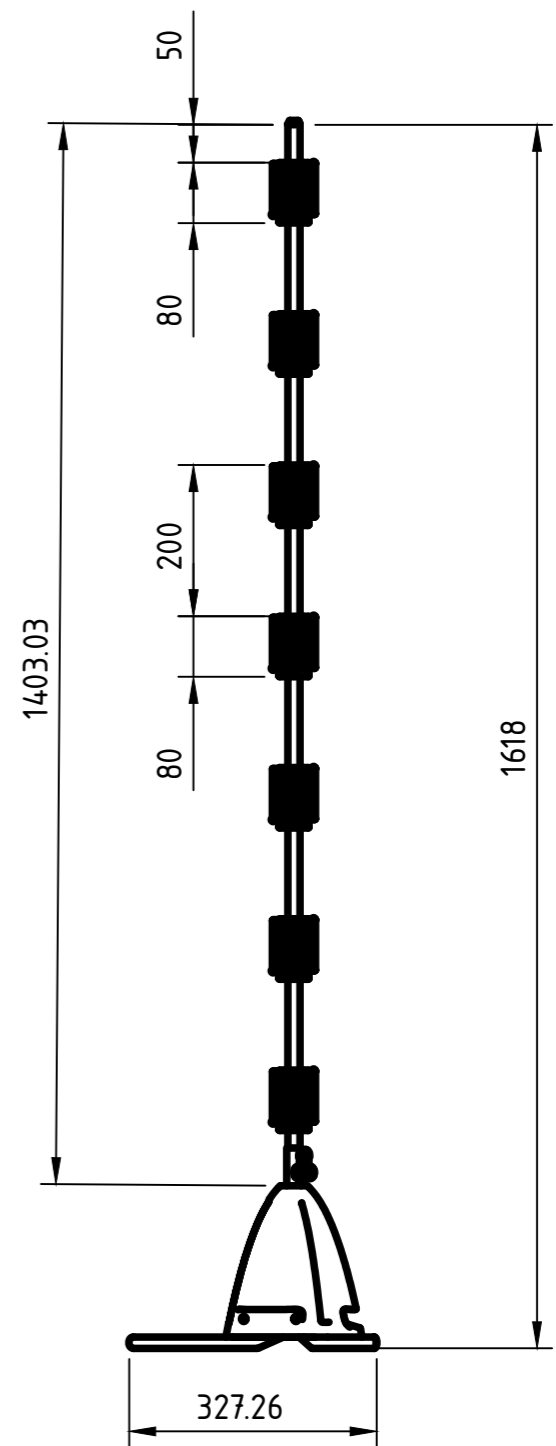
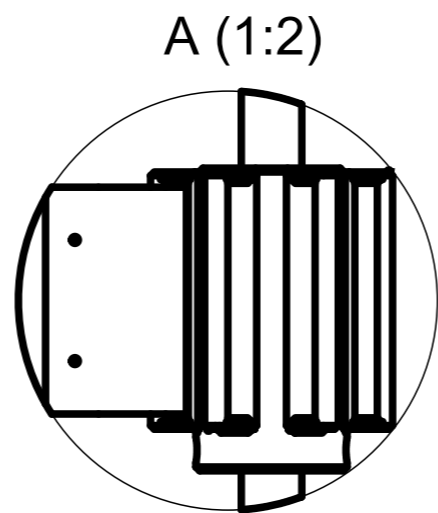
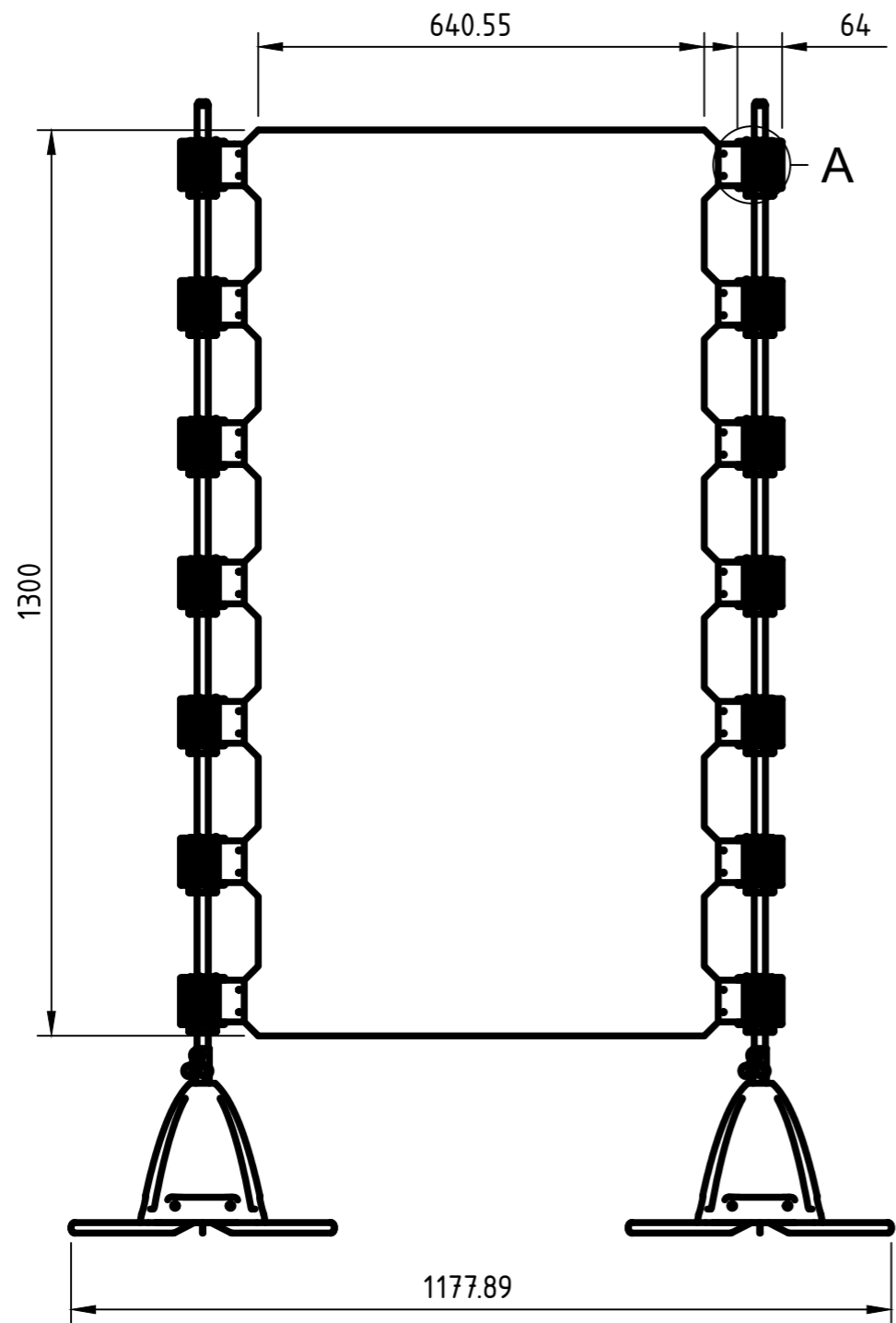
Dib.	Fecha	Nombre	Taller de Diseño Industrial IV	 ludi experiencia de juego creativo
Rev.	3/12			
Apr.				
Esc: 1:3				
	Base estructural Patas metálicas			
Toler. Rug.				



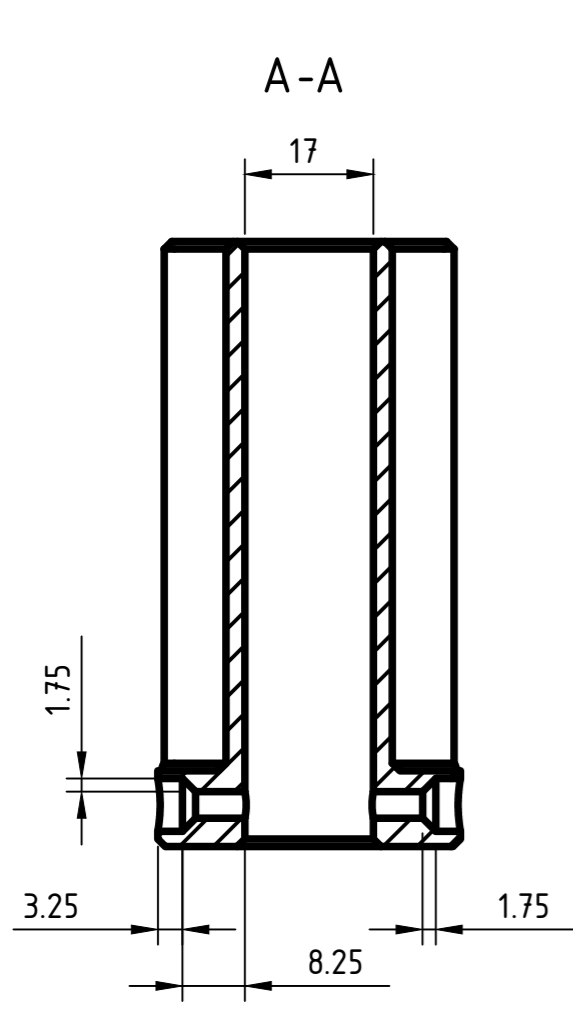
Mecanismo de ajuste (1:1)



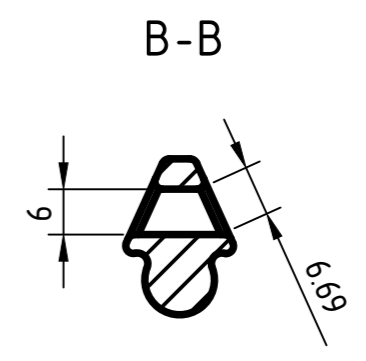
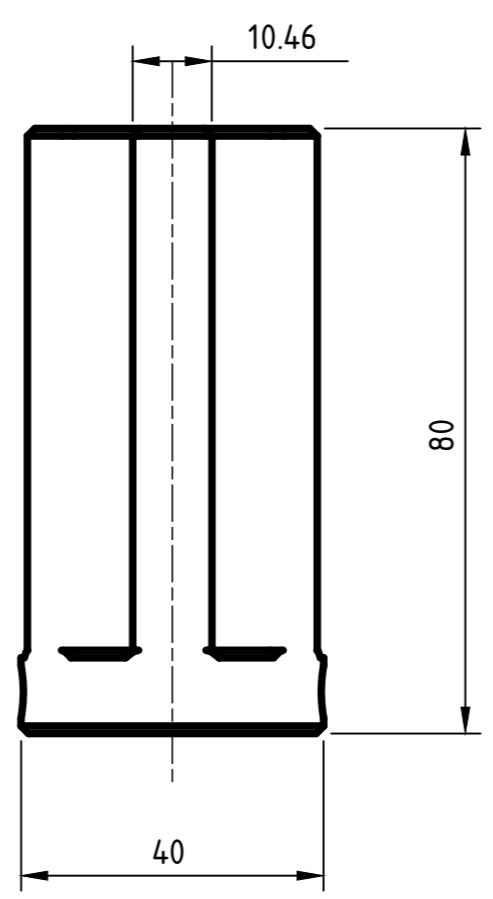
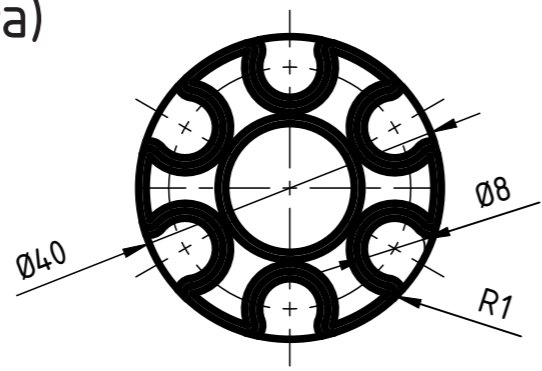
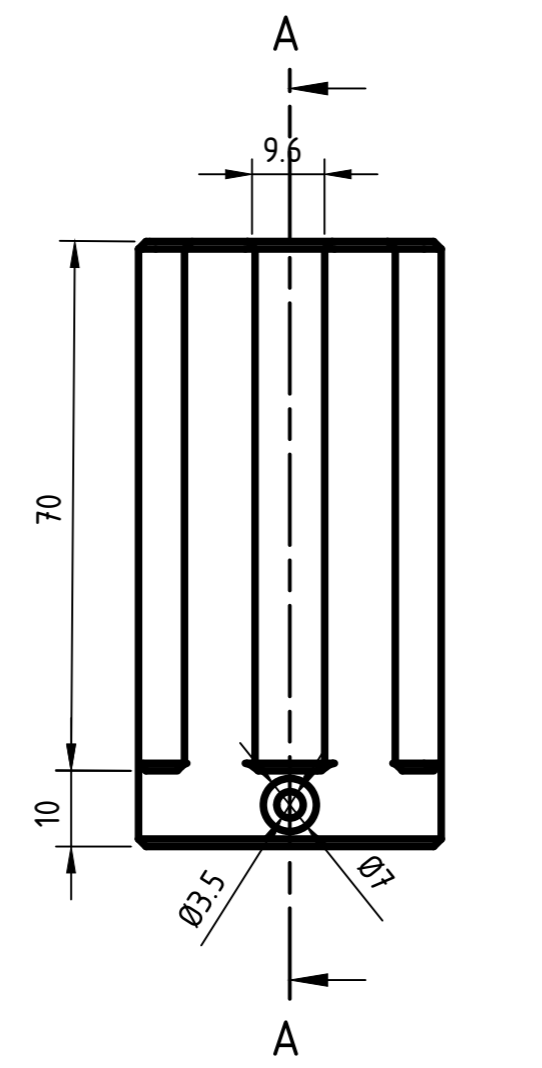
	Fecha	Nombre	Taller de Diseño Industrial IV	 <i>experiencia de juego creativo</i>
Dib.	3/12			
Rev.				
Apr.				
Esc: 1:2			Base estructural Piezas adicionales	
				
Toler. 0,25mm Rug.				



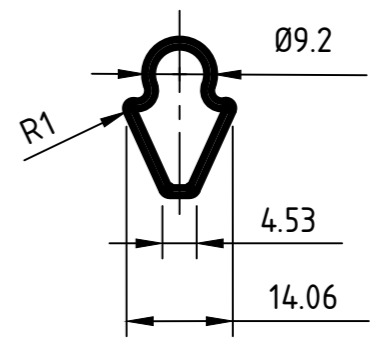
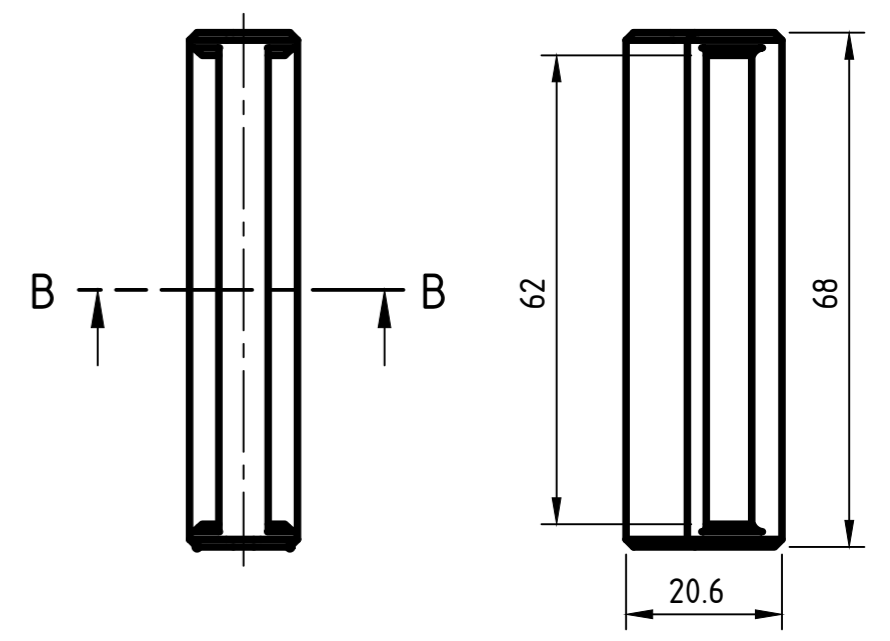
	Fecha	Nombre	Taller de Diseño Industrial IV	
Dib.	3/12			
Rev.				
Apr.				
Esc: 1:10				Delimitador de espacios Dimensiones generales
Toler.				
Rug.				




Pieza madre (hembra)

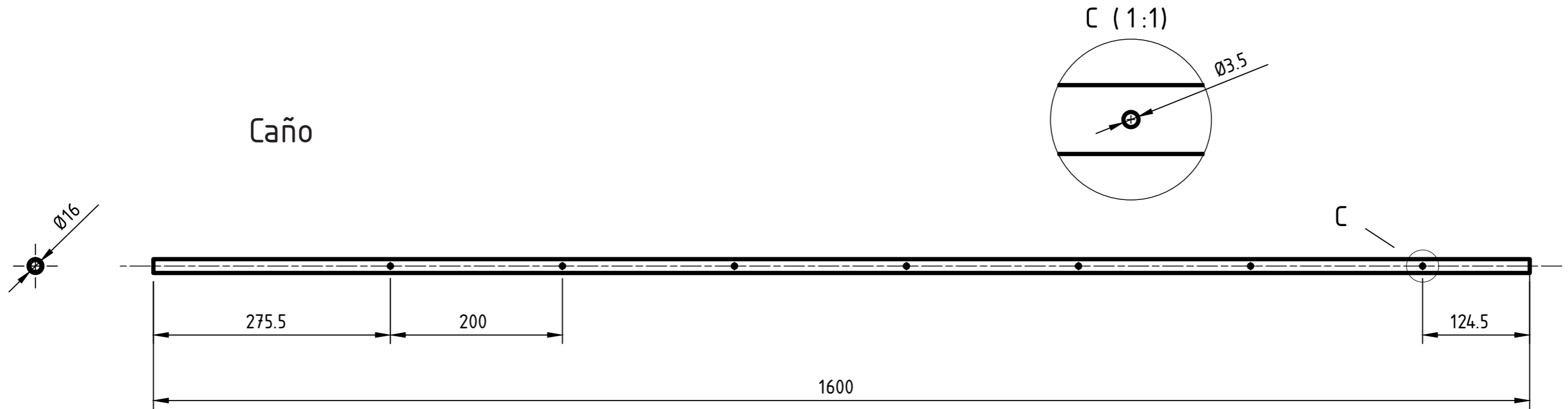


Pieza macho

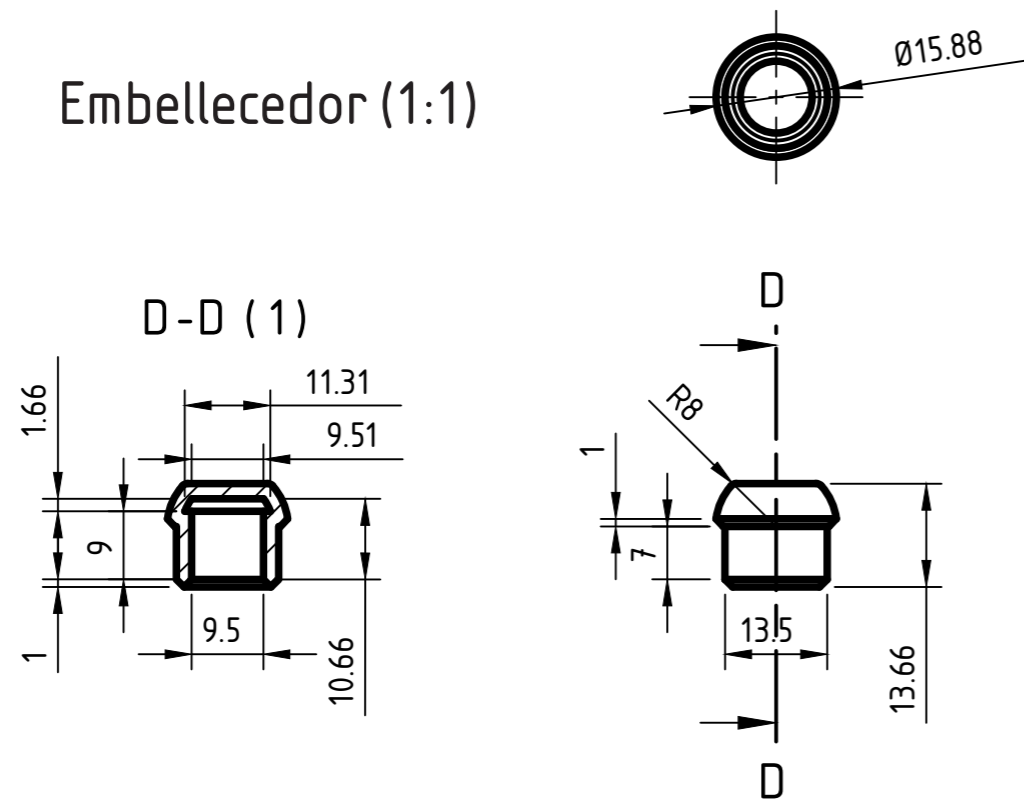


	Fecha	Nombre	Taller de Diseño Industrial IV	 <i>experiencia de juego creativo</i>
Dib.	3/12			
Rev.				
Apr.				
Esc: 1:1			Delimitador de espacios Vínculos	
 Toler. 0,4mm Rug.				

Caño

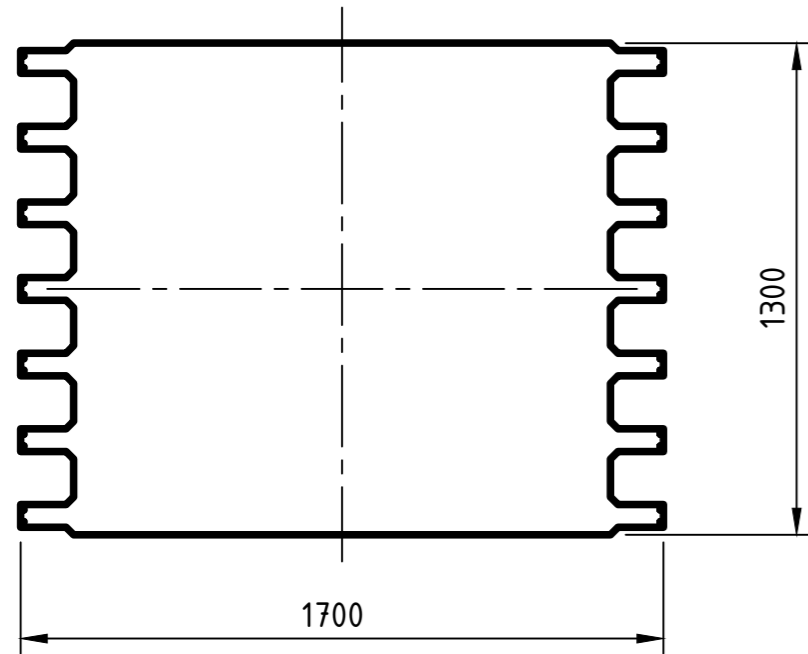


Embellecedor (1:1)

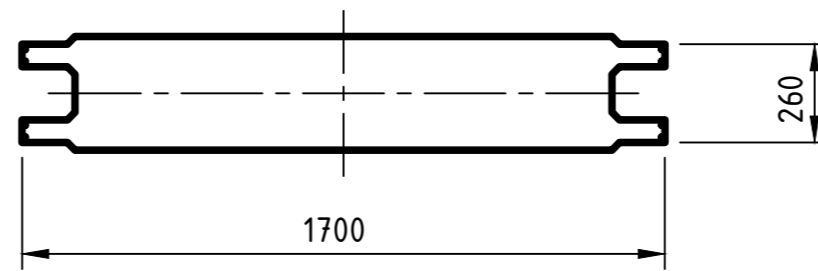


	Fecha	Nombre	Taller de Diseño Industrial IV	 <i>experiencia de juego creativo</i>
Dib.	3/12			
Rev.				
Apr.				
Esc: 1:5	Delimitador de espacios Caños			
 Toler. 0,25mm Rug.				

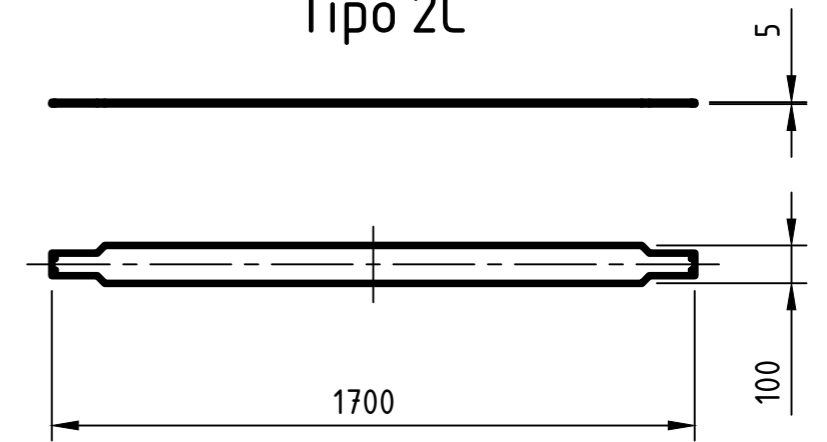
Tipo 2A



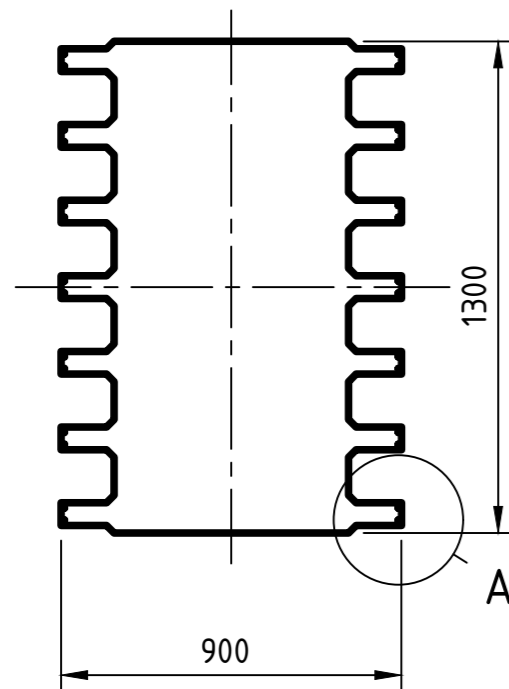
Tipo 2B



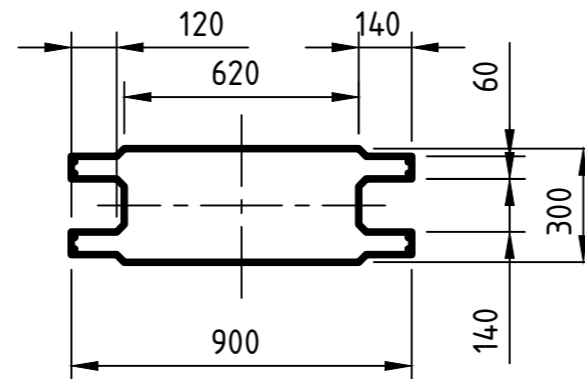
Tipo 2C



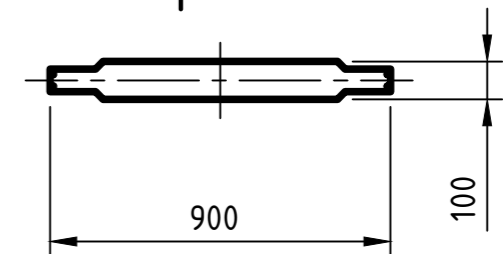
Tipo 1A



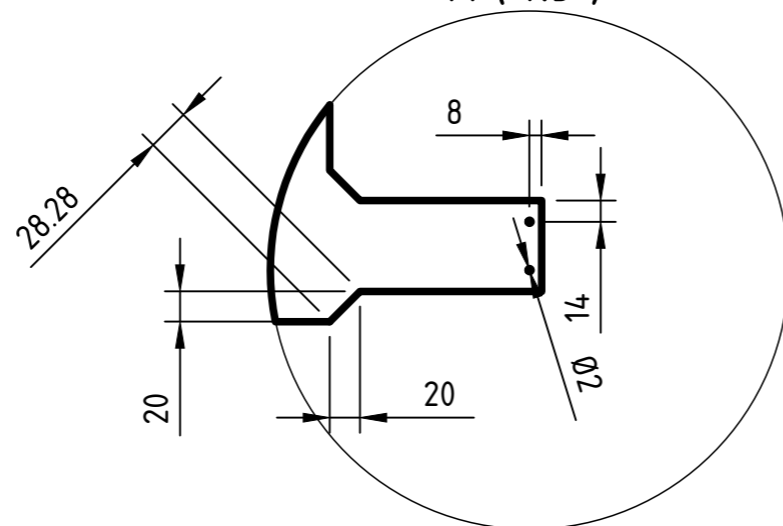
Tipo 1B



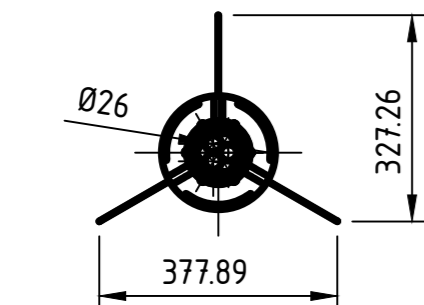
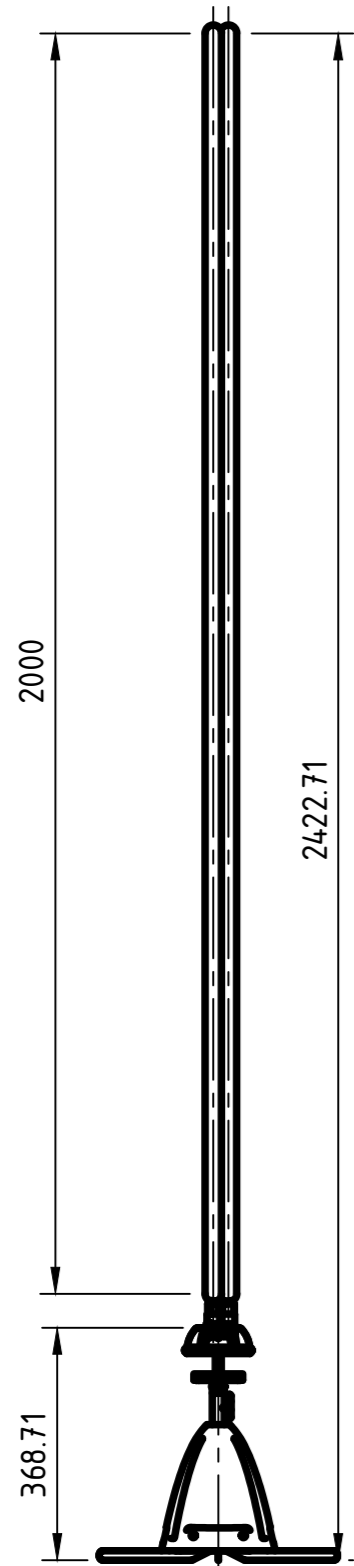
Tipo 1C



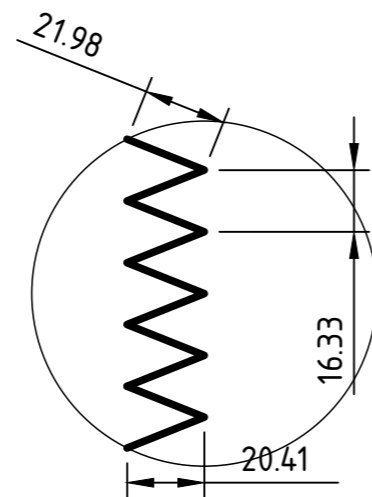
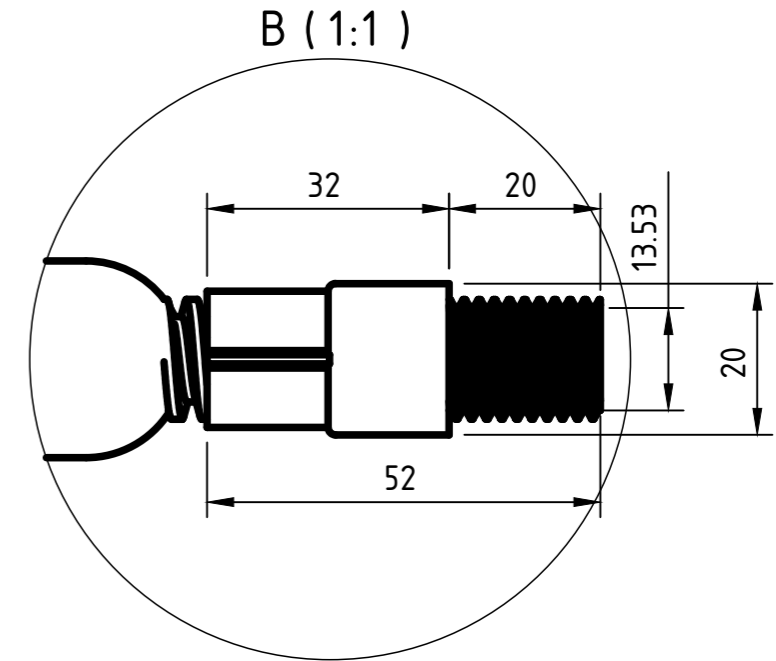
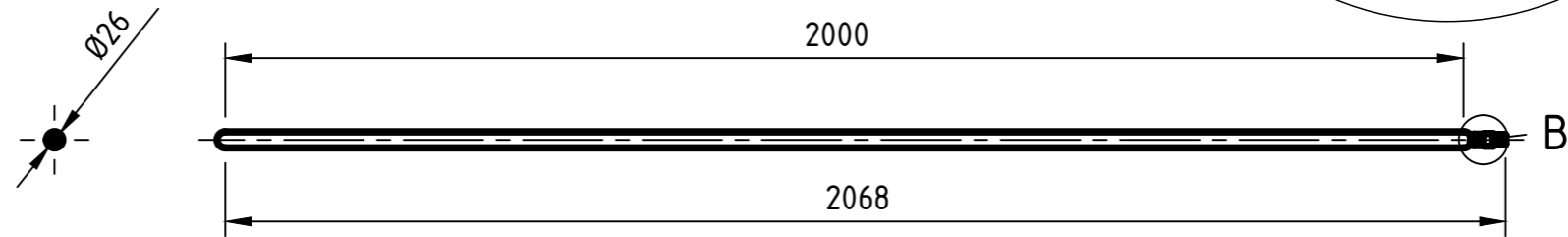
A (1:5)



	Fecha	Nombre	Taller de Diseño Industrial IV	 <i>experiencia de juego creativo</i>
Dib.	3/12			
Rev.			Delimitador de espacios Bandas y superficies	
Apr.				
Esc: 1:20				
 Toler. Rug.				

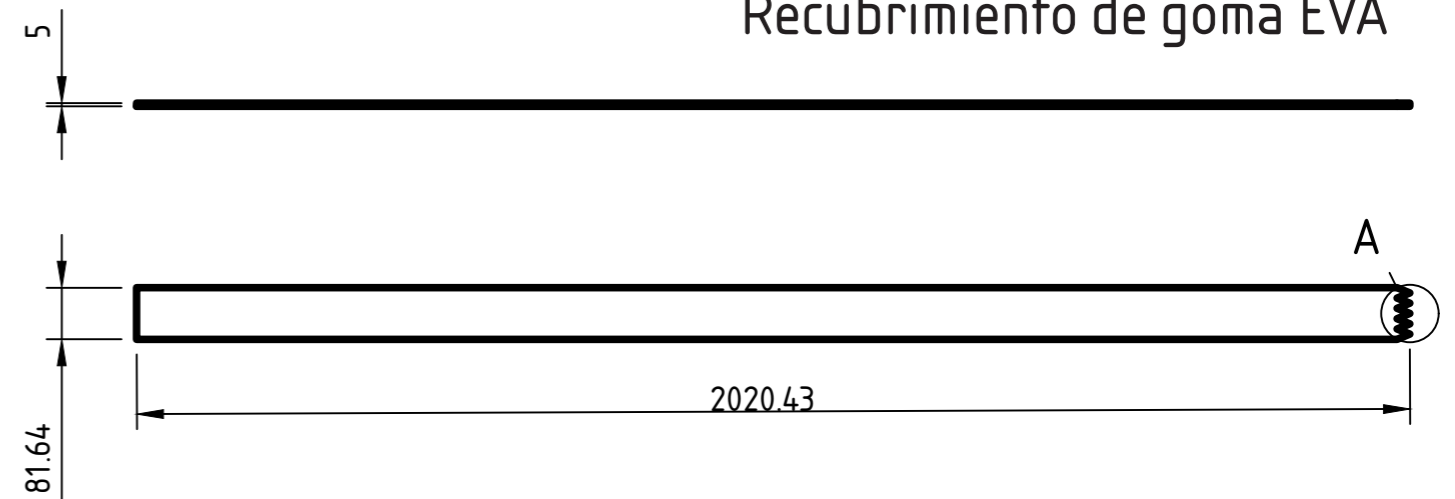



Brazo flexible

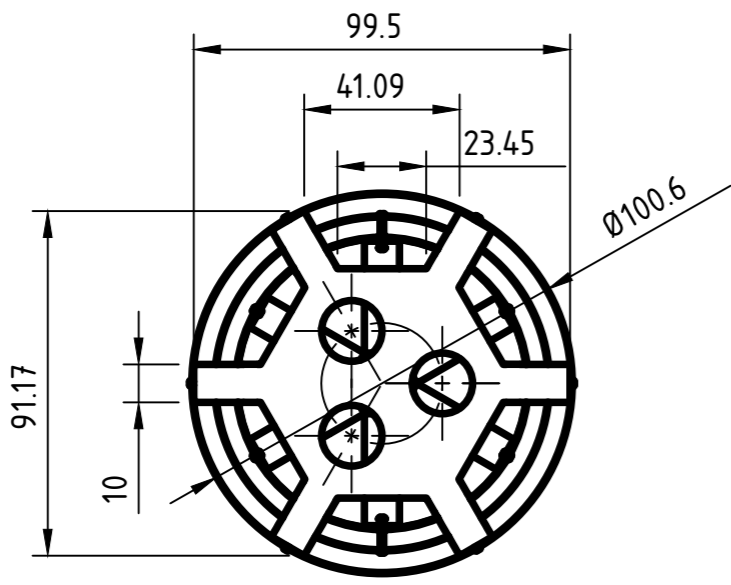
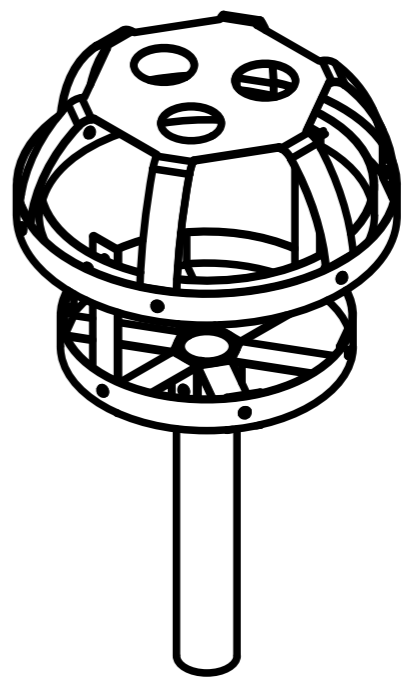
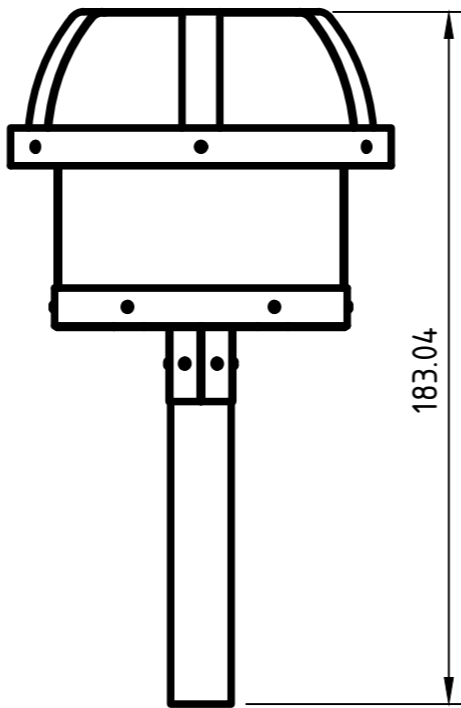
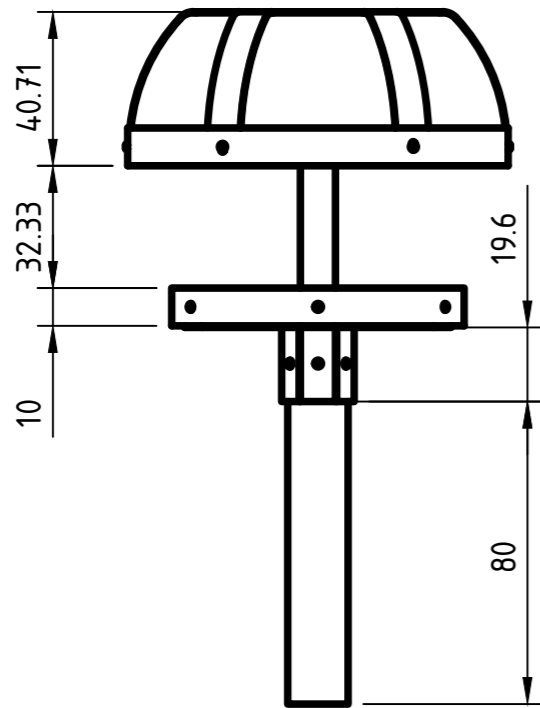



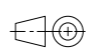
A (1:2)

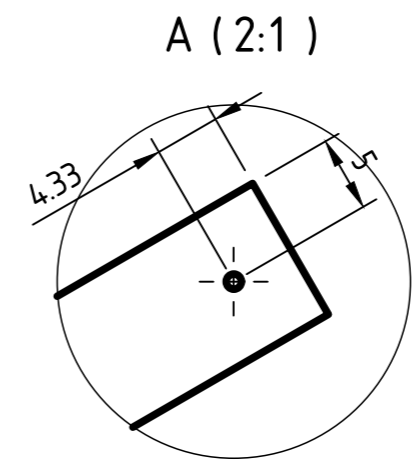
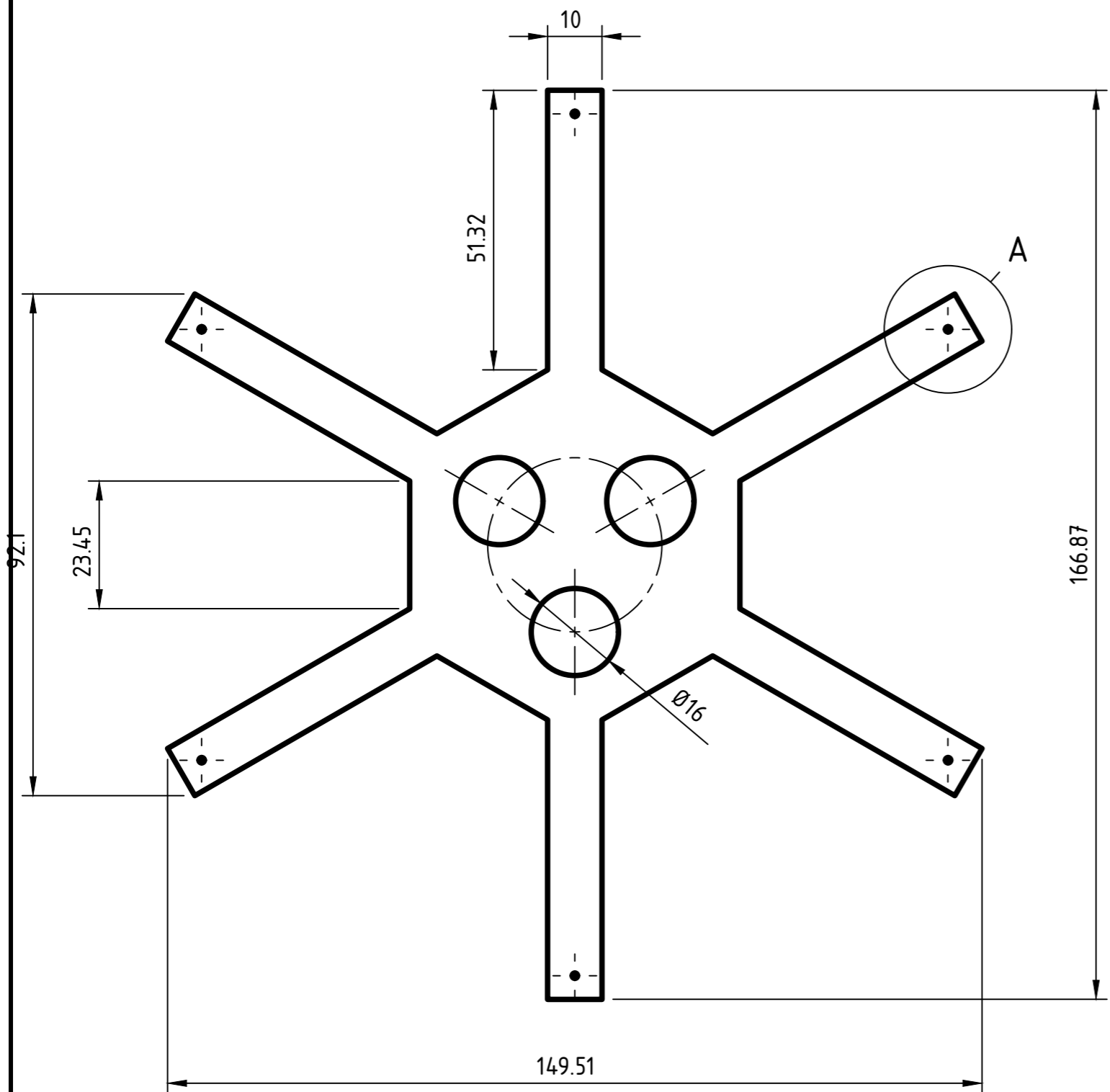
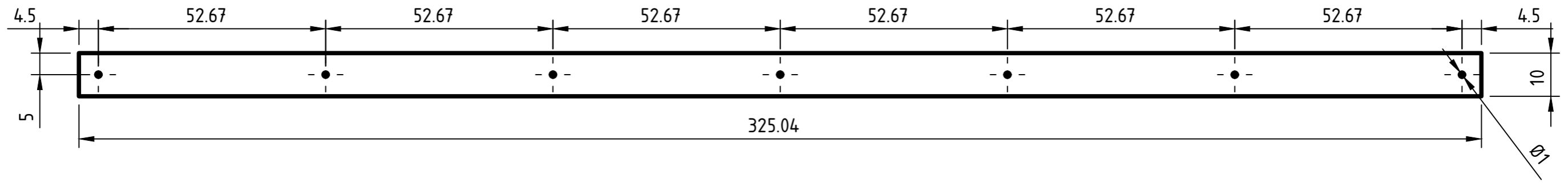
Recubrimiento de goma EVA



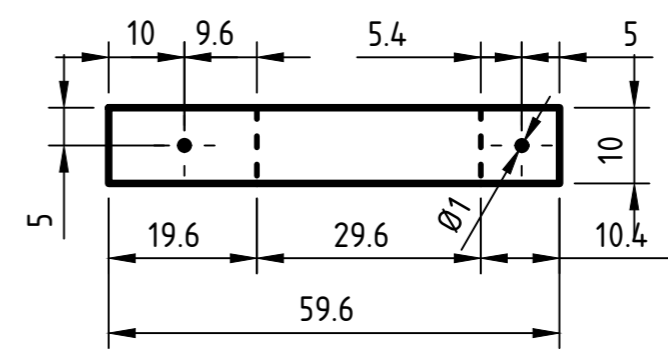
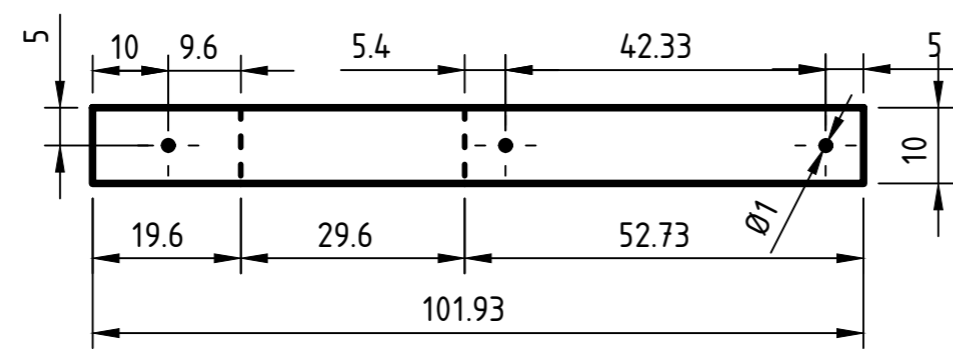
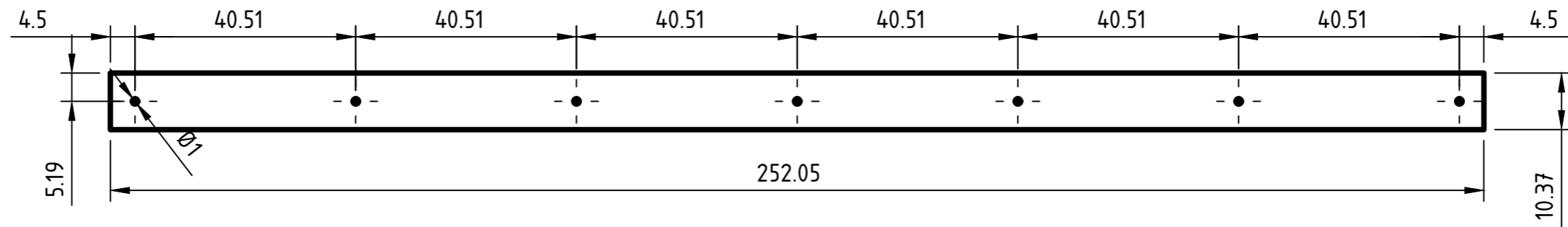
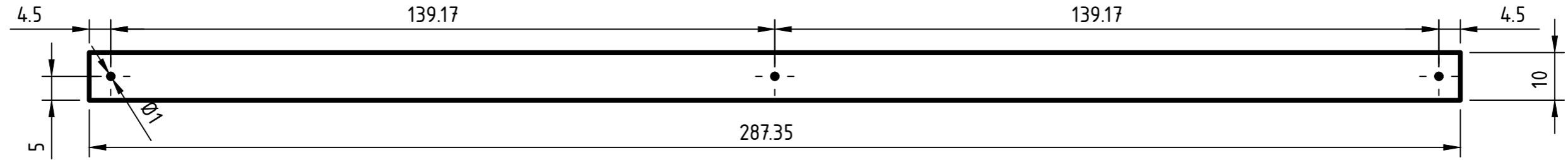
Dib.	Fecha	Nombre	Taller de Diseño Industrial IV	 <i>experiencia de juego creativo</i>
Rev.	3/12			
Apr.			<p style="text-align: center;">Balancín</p> <p style="text-align: center;">Dimensiones generales y elementos específicos</p>	
Esc: 1:12				
Toler. Rug.				



	Fecha	Nombre	Taller de Diseño Industrial IV	 <i>experiencia de juego creativo</i>
Dib.	3/12			
Rev.				
Apr.				
Esc: 1:2			Mecanismo de rotación biaxial Dimensiones generales	
				
Toler. Rug.				

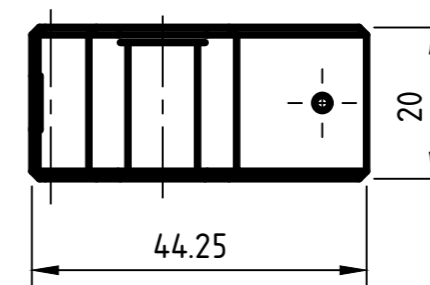
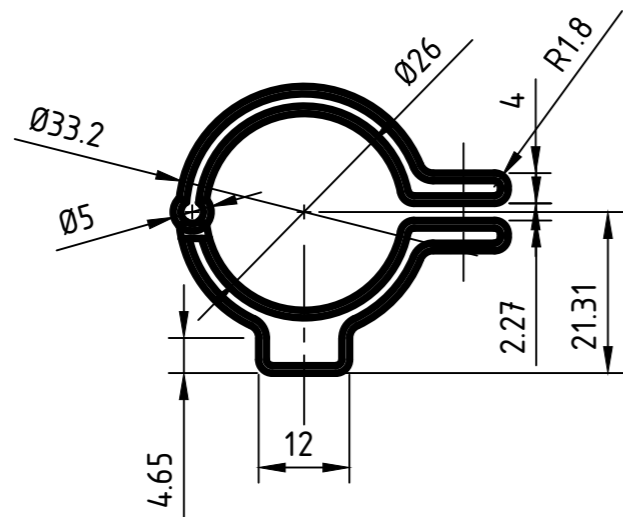
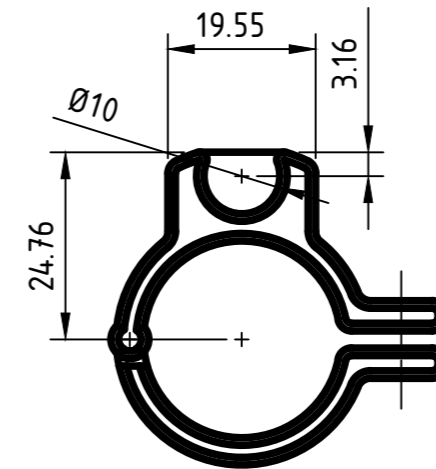
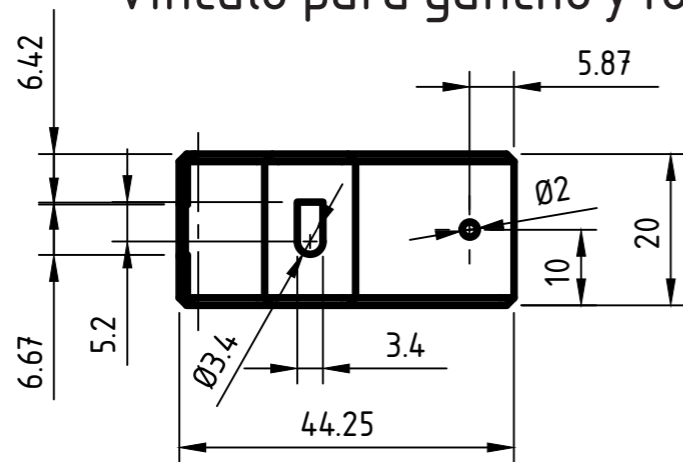


	Fecha	Nombre	Taller de Diseño Industrial IV	 <i>experiencia de juego creativo</i>
Dib.	3/12			
Rev.				
Apr.				
Esc: 1:1			Mecanismo de rotación biaxial Desarrollos	
				
Toler. Rug.				



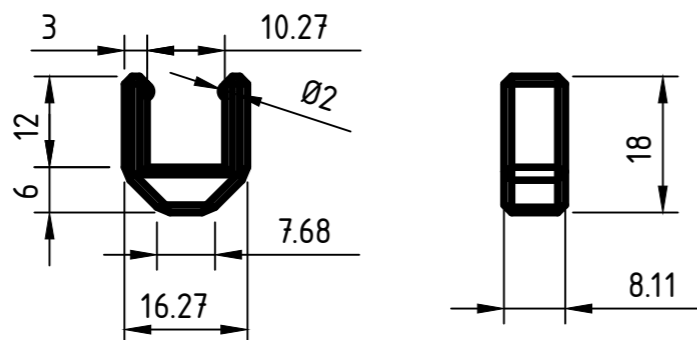
	Fecha	Nombre	Taller de Diseño Industrial IV	 <i>experiencia de juego creativo</i>
Dib.	3/12			
Rev.				
Apr.				
Esc: 1:1	Mecanismo de rotación biaxial Desarrollos			
				
Toler. Rug.				

Vínculo para gancho y tornillo



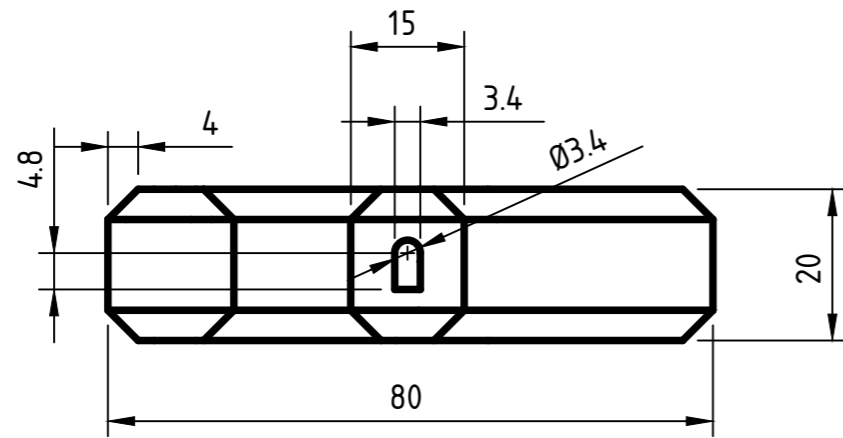
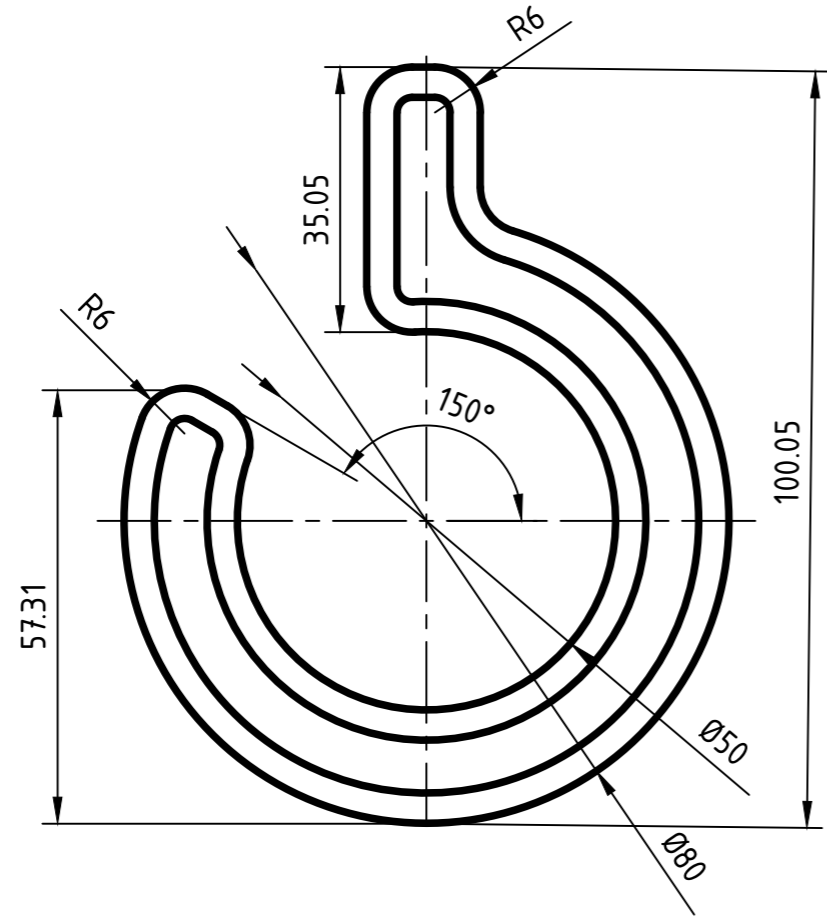
Vínculo para cintas

Pieza de cierre

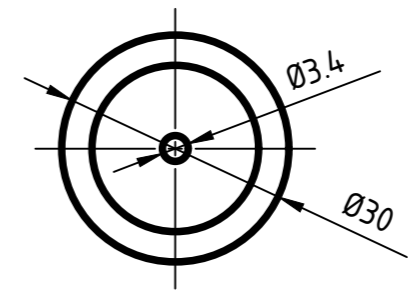
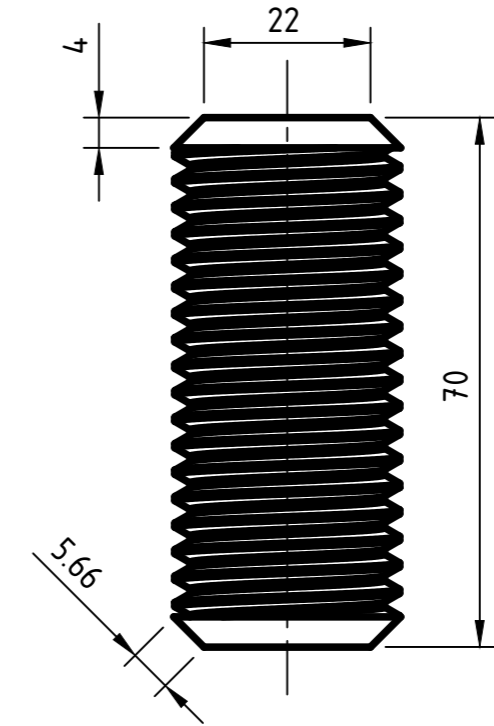



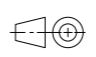
	Fecha	Nombre	Taller de Diseño Industrial IV	
Dib.	3/12			
Rev.				
Apr.				
Esc: 1:1	Vínculos a brazos flexibles			
Toler. 0,25mm Rug.				

Gancho

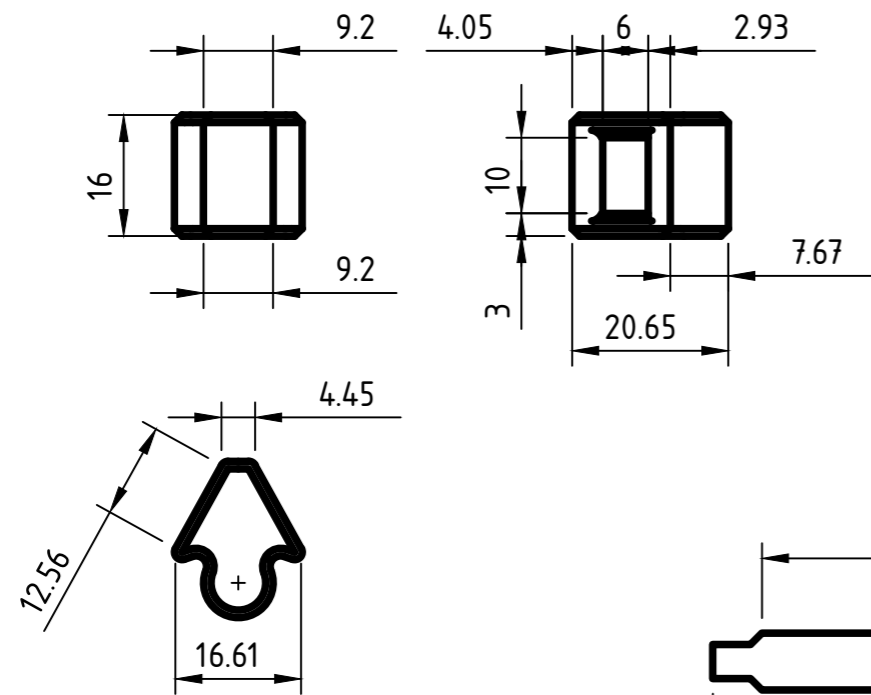


Tornillo

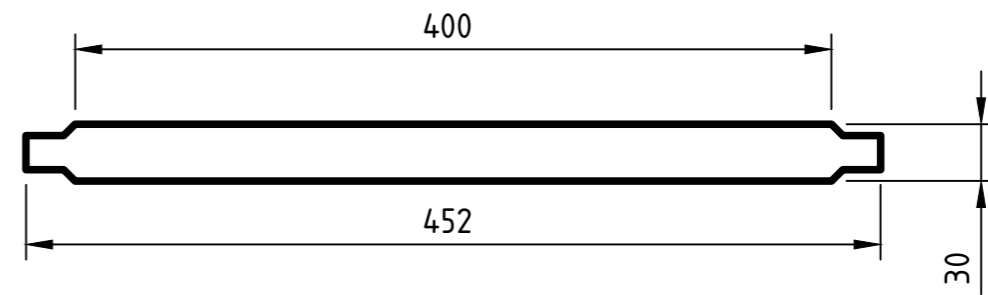


	Fecha	Nombre	Taller de Diseño Industrial IV	 <i>experiencia de juego creativo</i>
Dib.	3/12			
Rev.				
Apr.				
Esc: 1:1	Tipologías de colgado y enroscado			
				
Toler. 0,25mm Rug.				

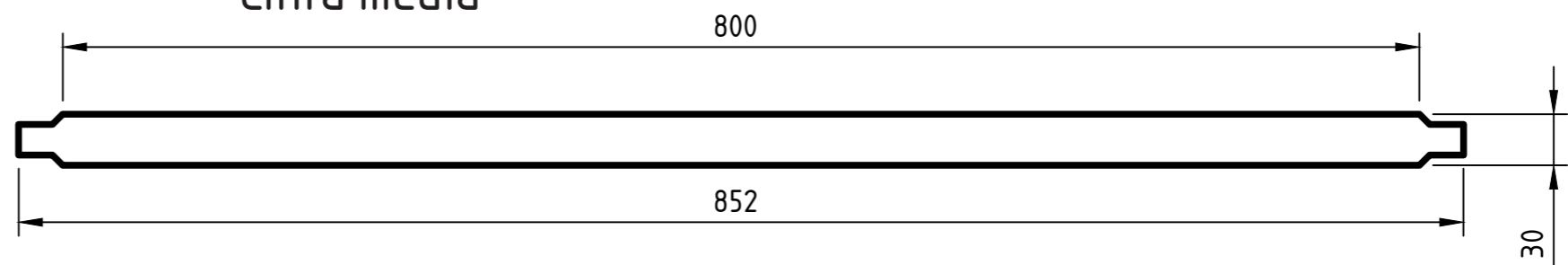
Pieza macho para cintas (1:1)



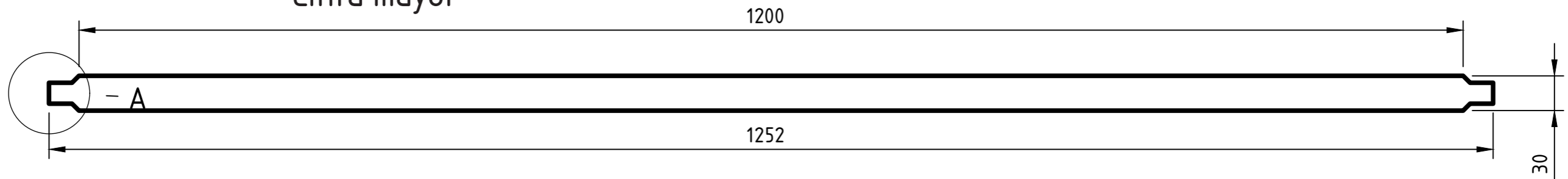
Cinta menor



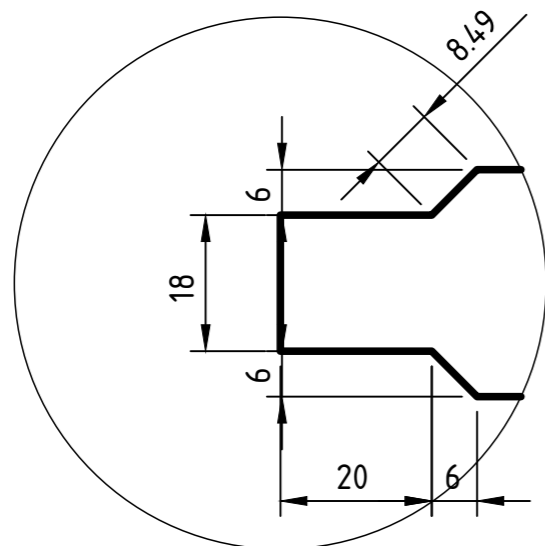
Cinta media


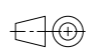


Cinta mayor

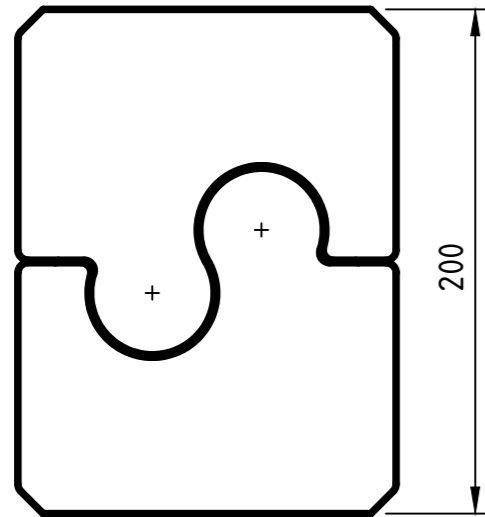


A (1:1)

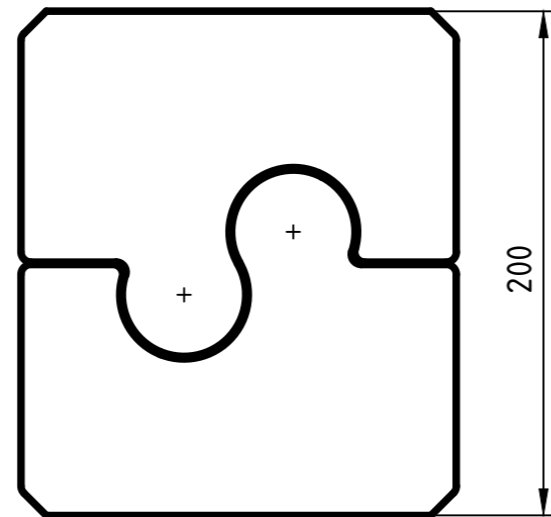


	Fecha	Nombre	Taller de Diseño Industrial IV	 <i>experiencia de juego creativo</i>
Dib.	3/12			
Rev.				
Apr.				
Esc: 1:4	 Cintas y vínculos			
Toler. 0,25mm Rug.				

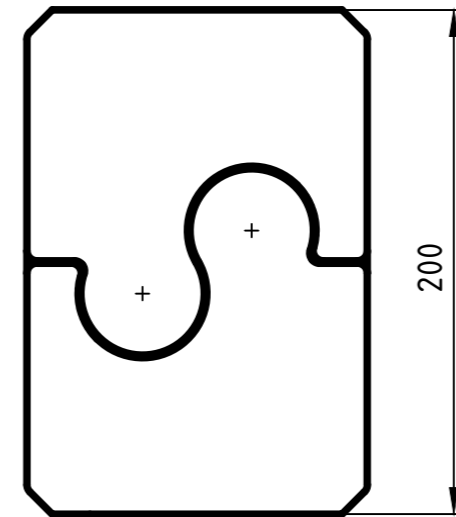
Volumen de base circular



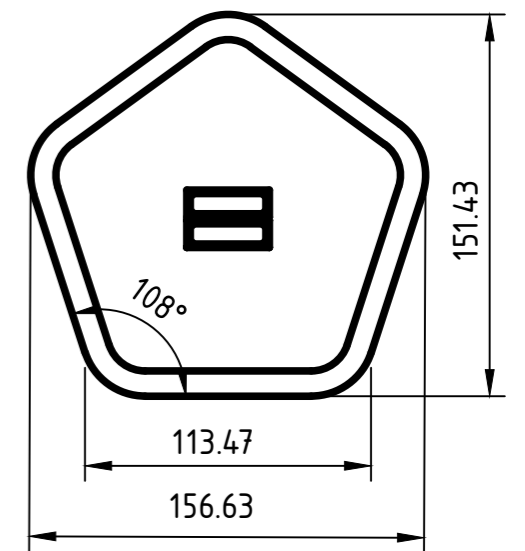
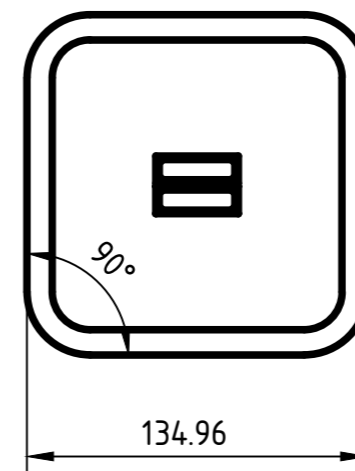
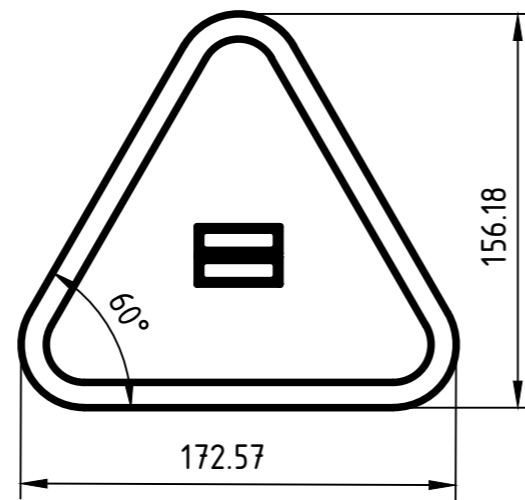
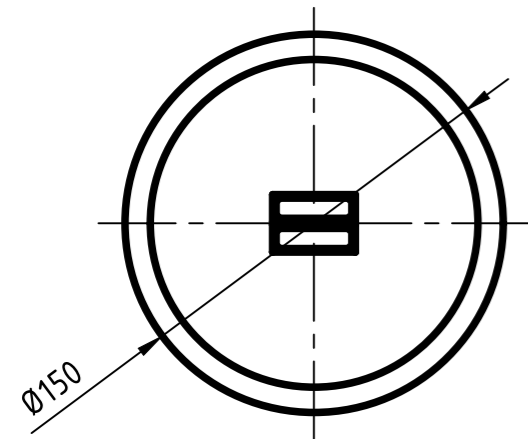
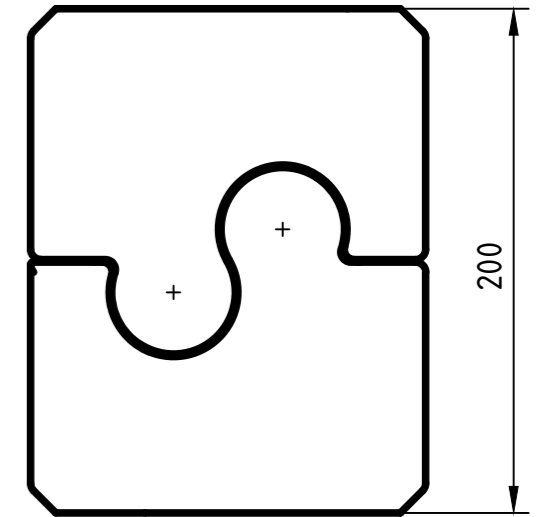
Volumen de base triangular



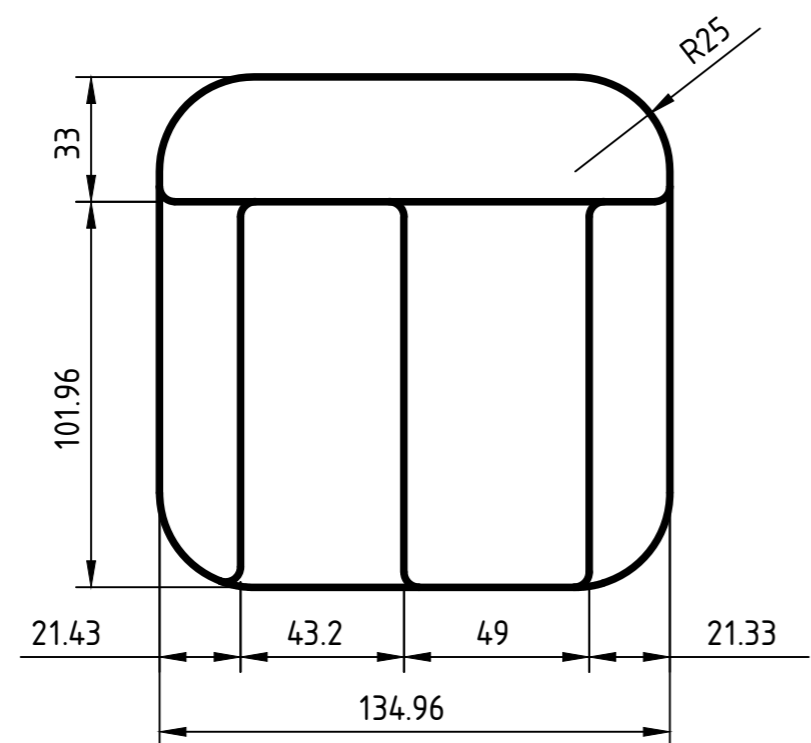
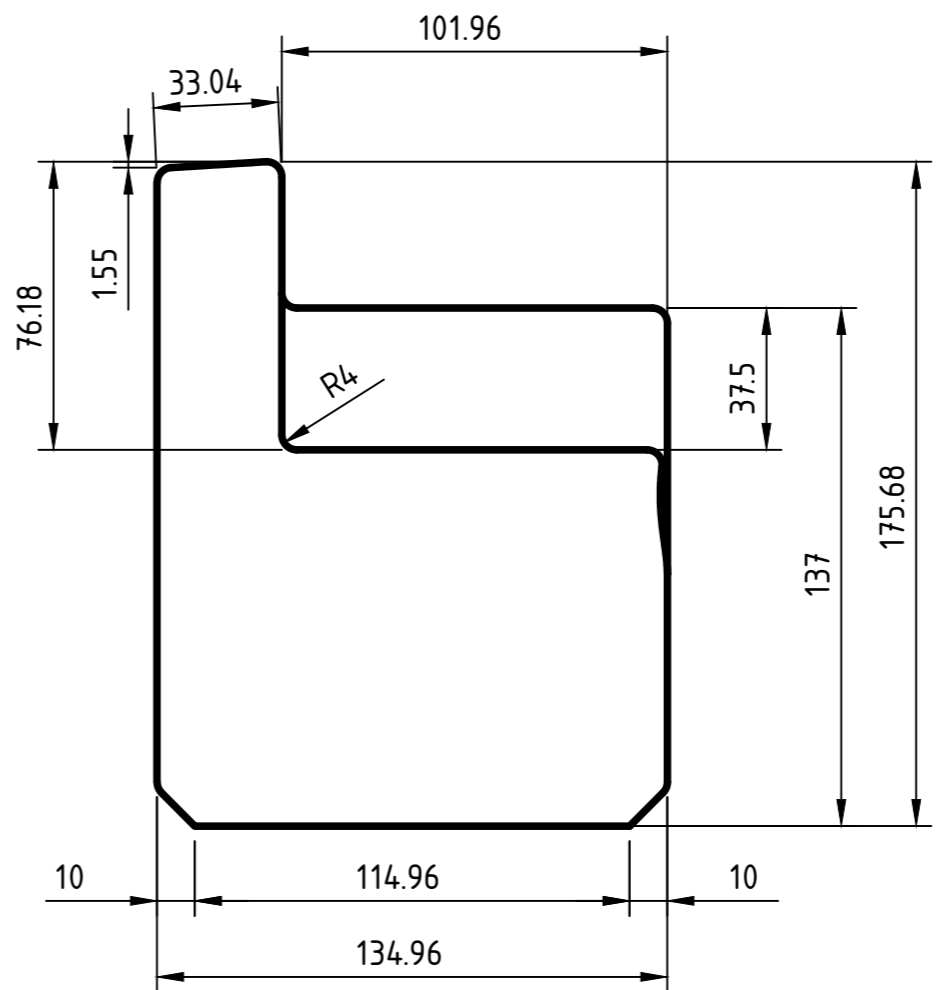
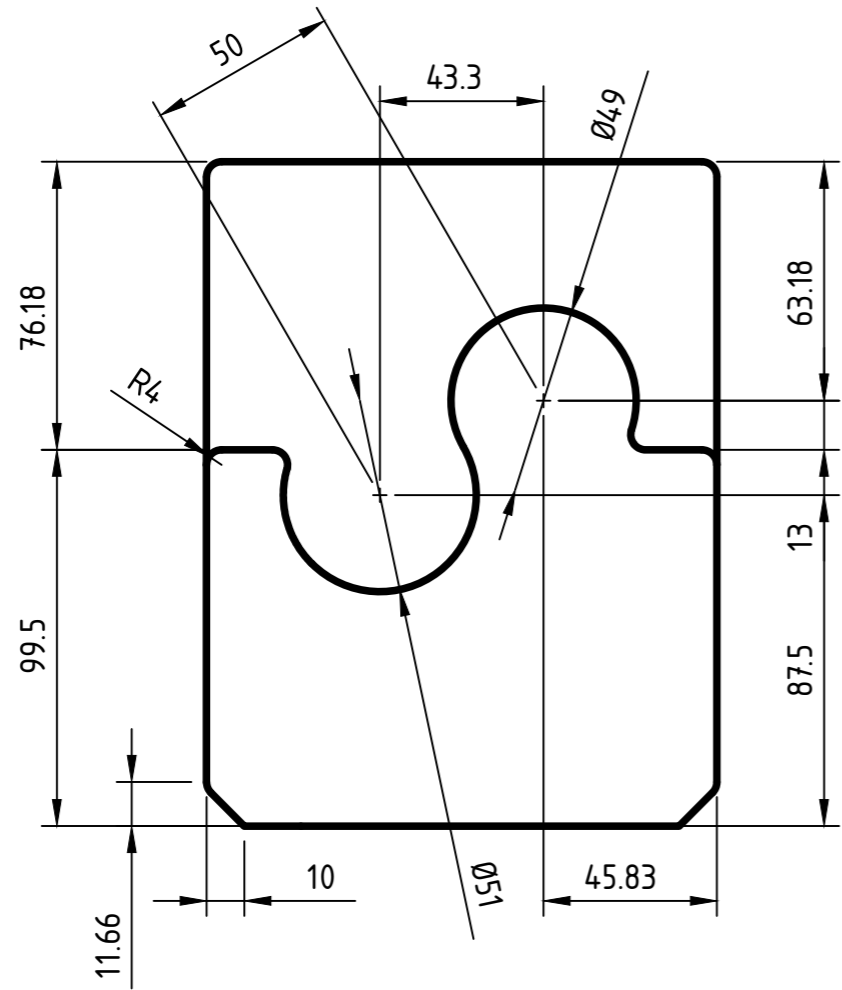
Volumen de base cuadrada



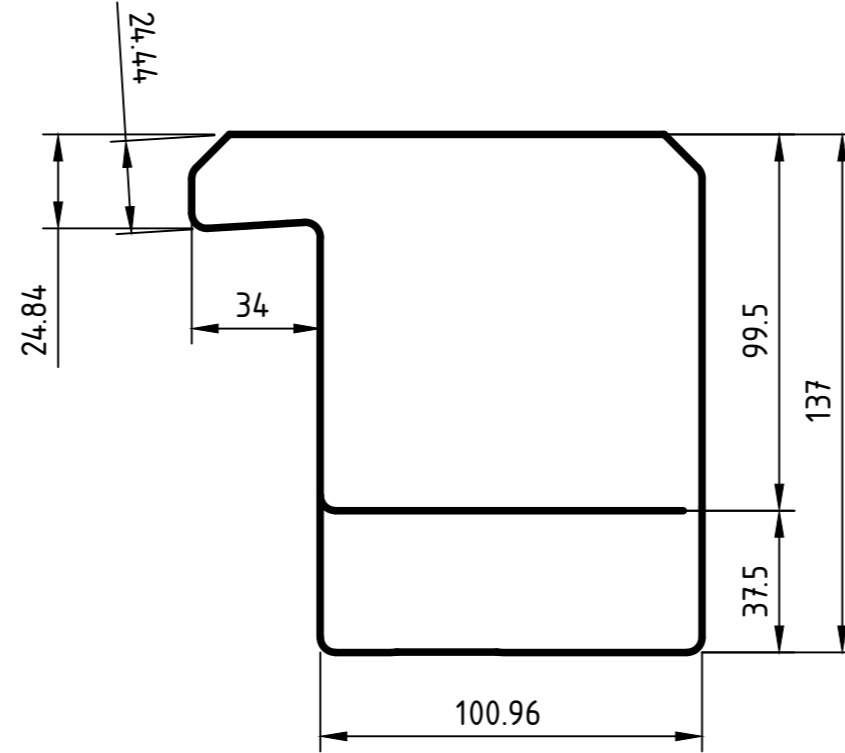
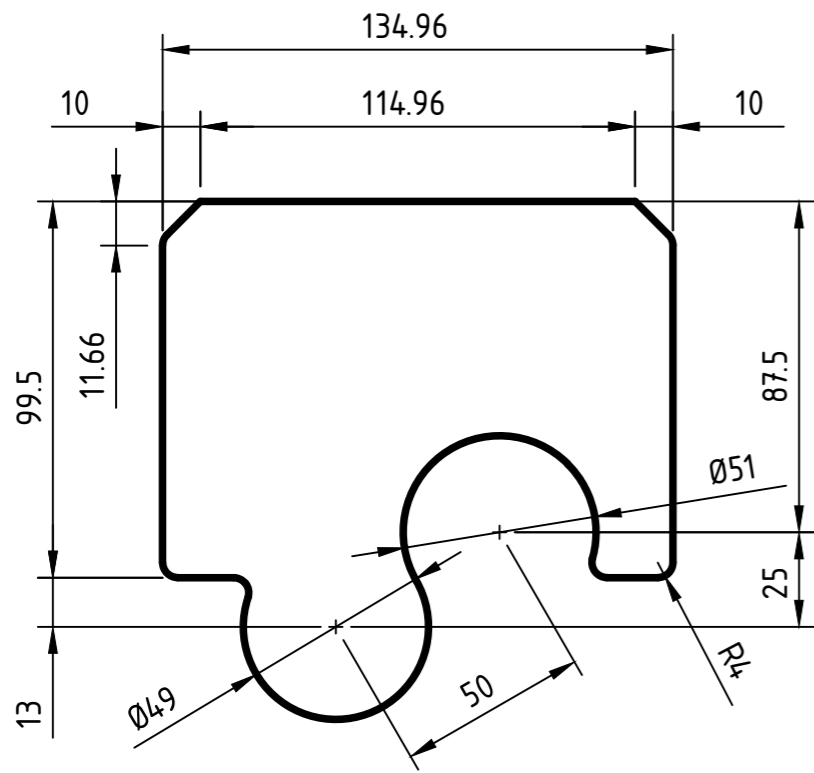
Volumen de base pentagonal



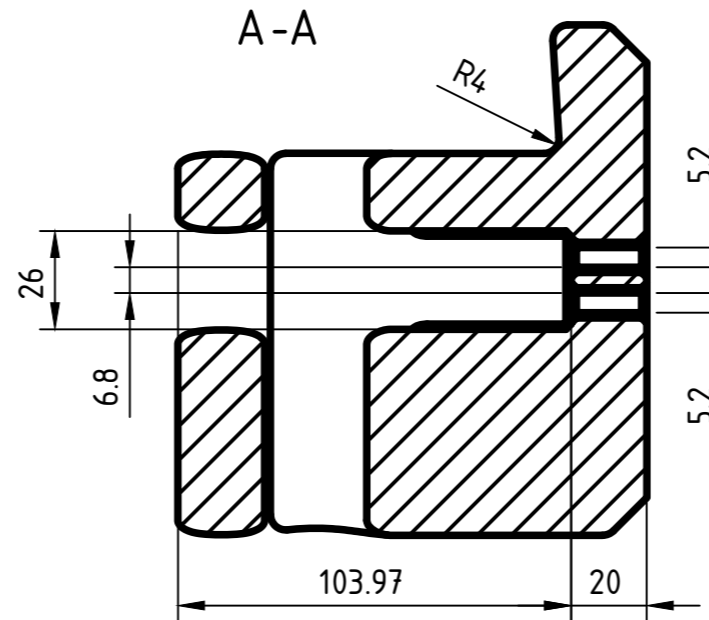
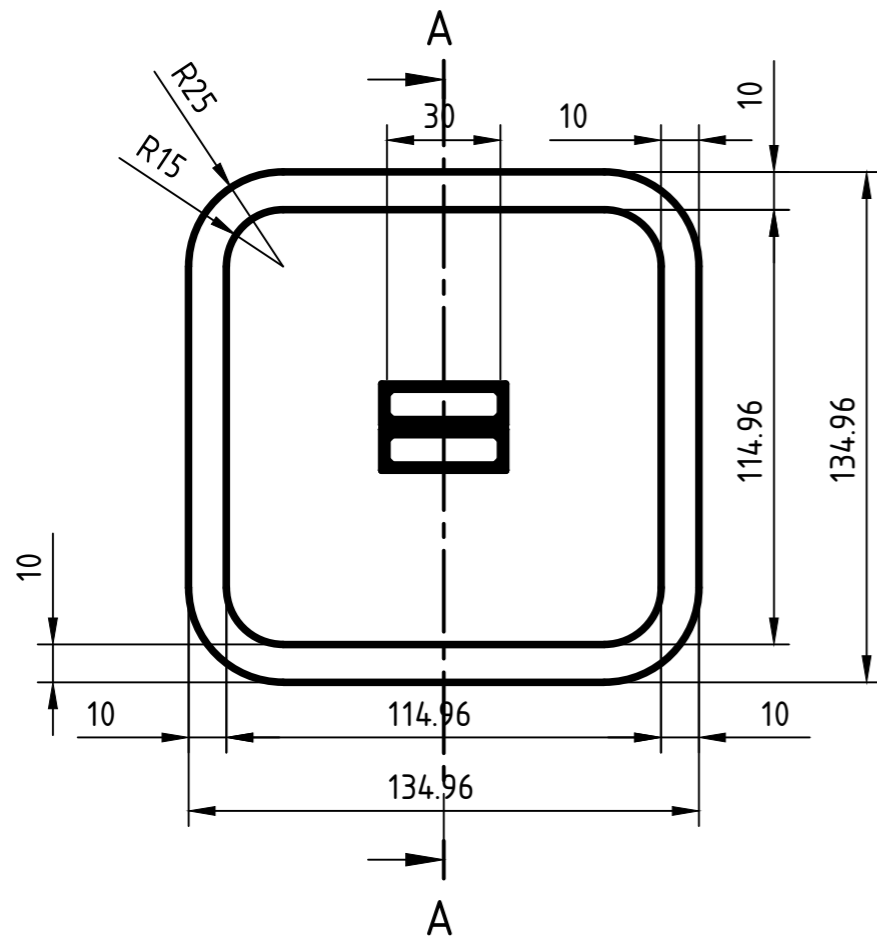
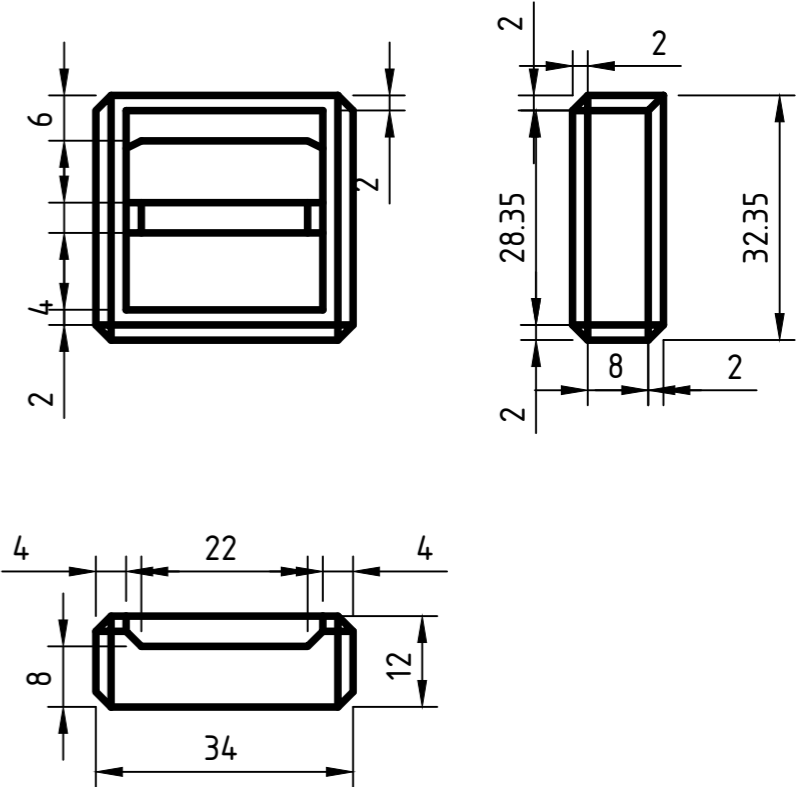
	Fecha	Nombre	Taller de Diseño Industrial IV	 <i>experiencia de juego creativo</i>
Dib.	3/12			
Rev.				
Apr.				
Esc: 1:3	<p style="text-align: center;">Volúmenes</p> <p style="text-align: center;">Dimensiones generales</p>			
				
Toler. 0,25mm Rug.				



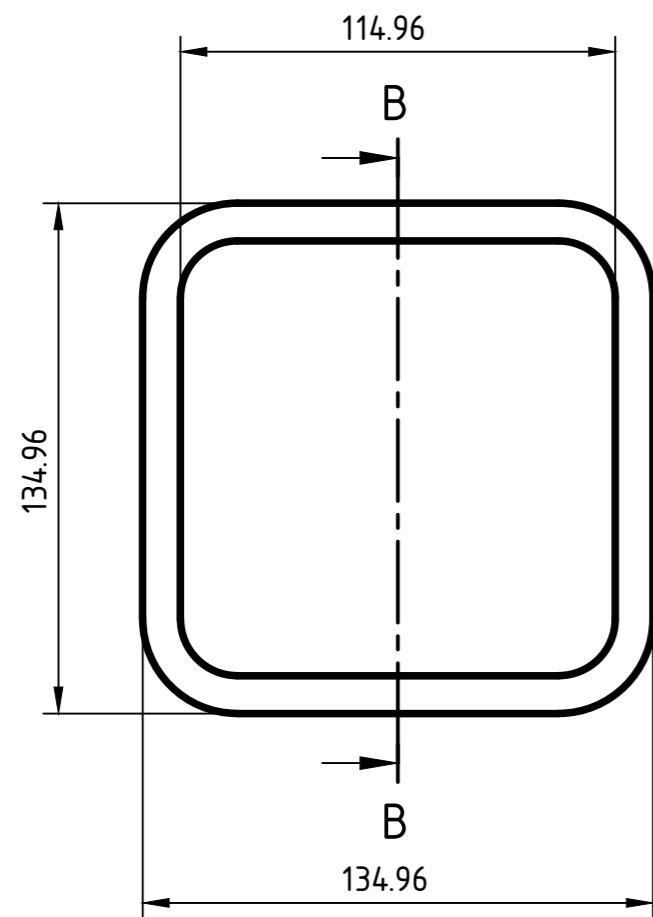
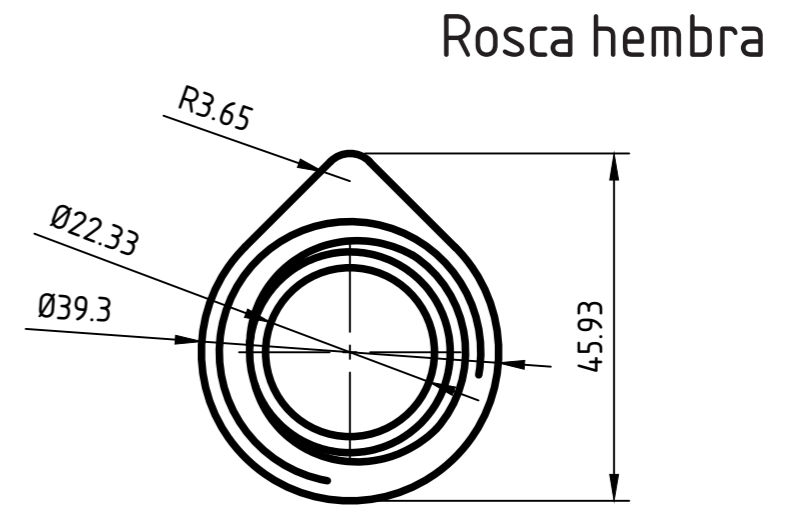
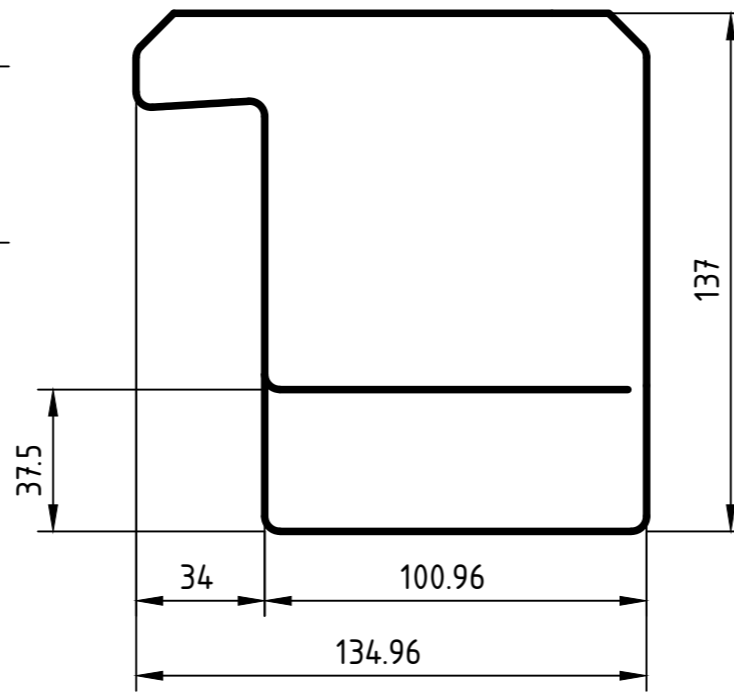
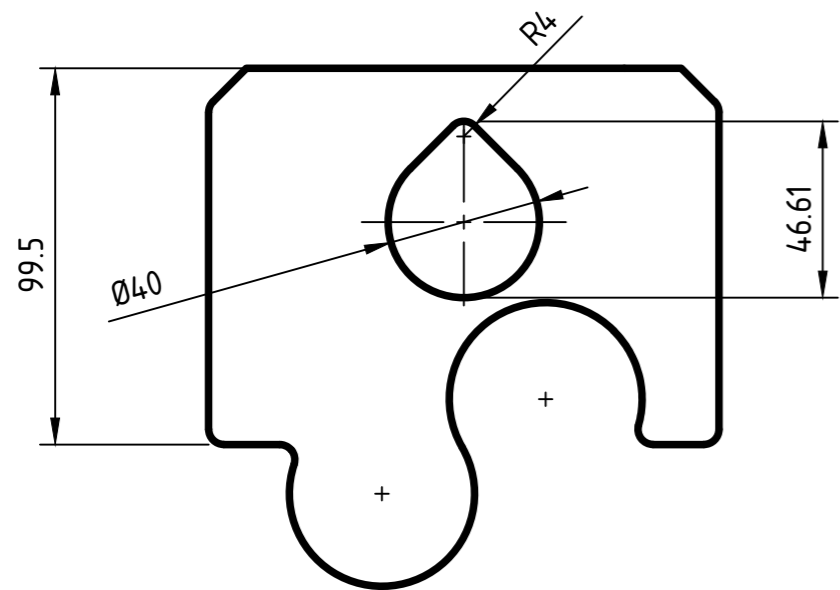
	Fecha	Nombre	Taller de Diseño Industrial IV	
Dib.	3/12			
Rev.				
Apr.				
Esc:1:2			Volúmenes Pieza Base	
Toler. 0,25mm Rug.				



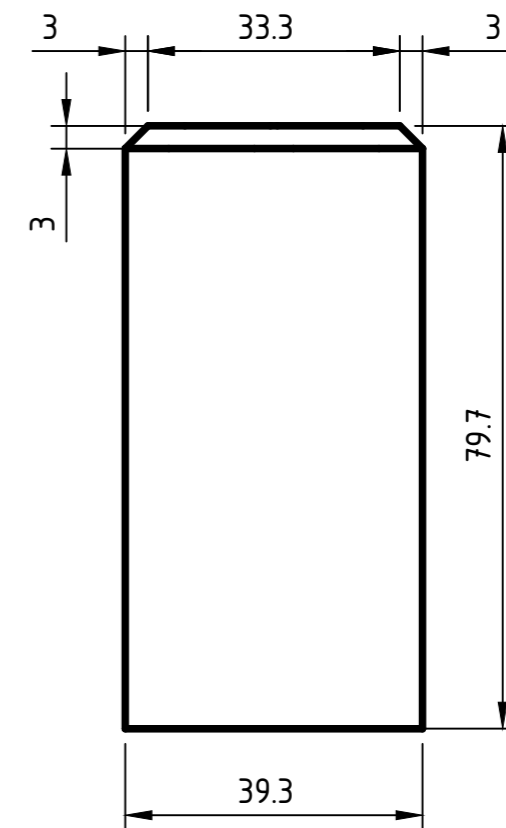
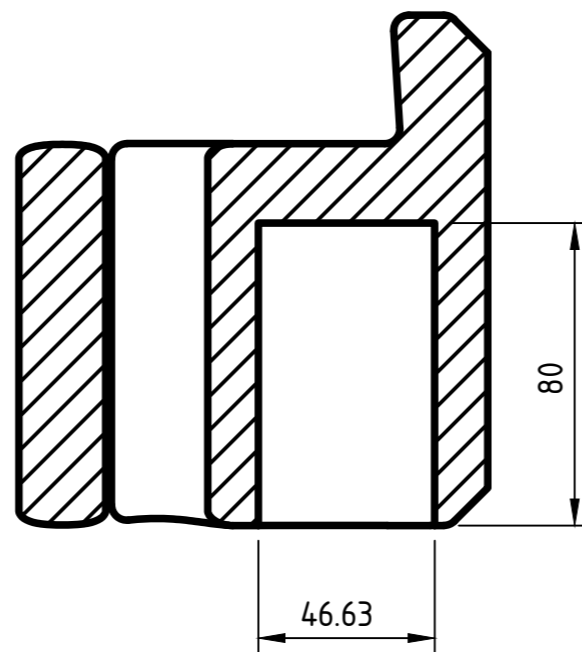
Mecanismo de sujeción de cinta (1:1)



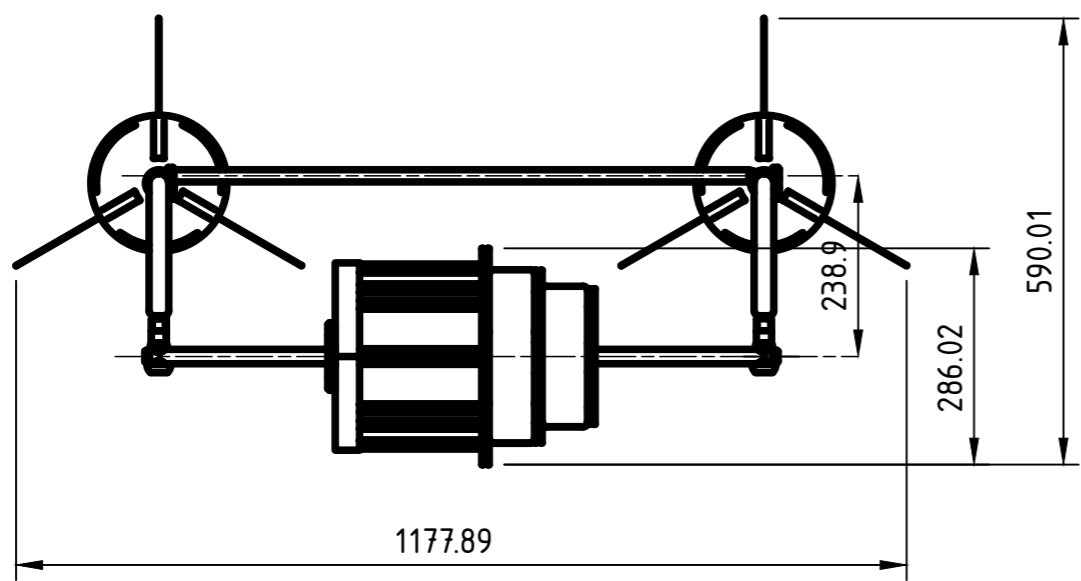
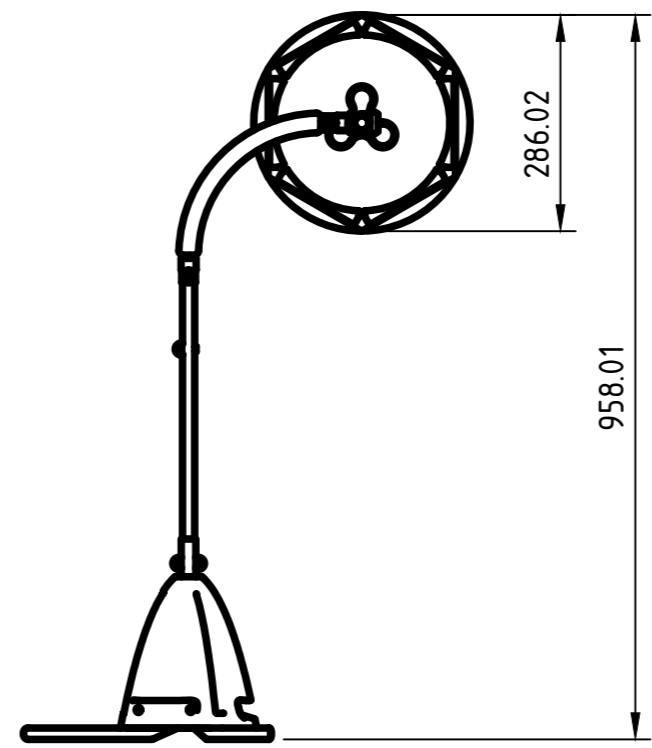
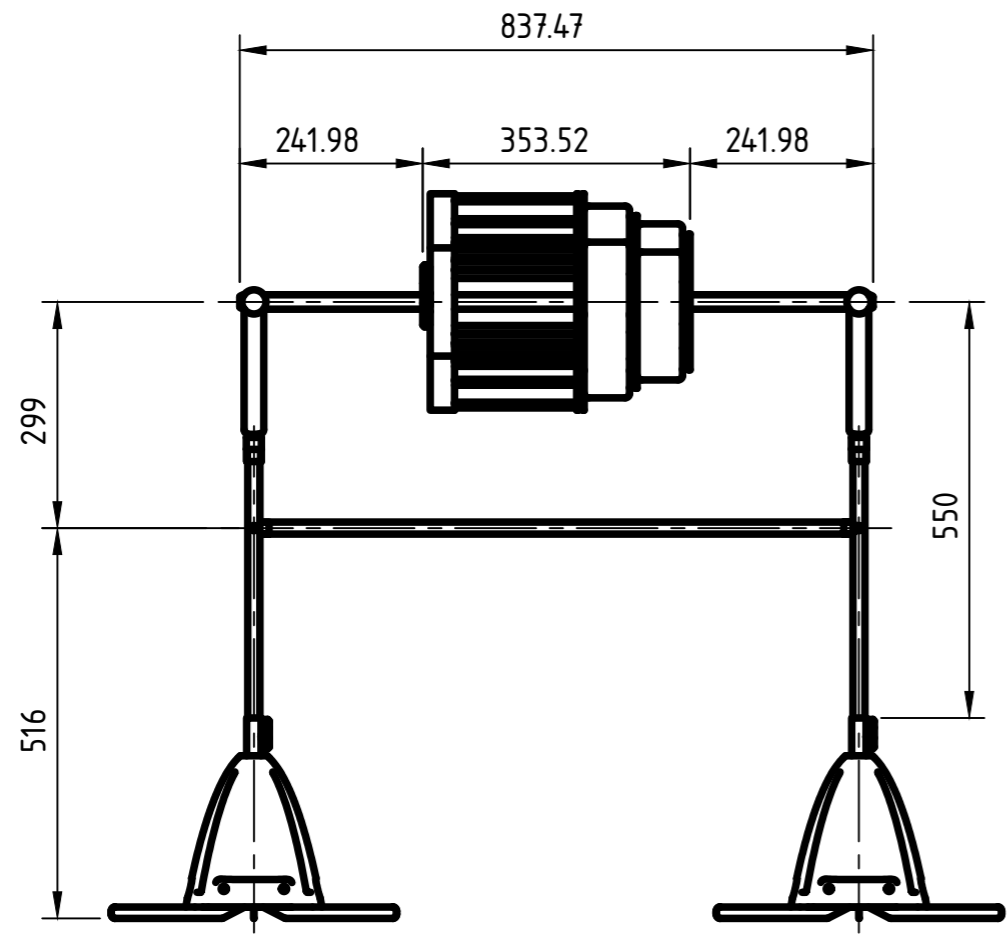
	Fecha	Nombre	Taller de Diseño Industrial IV	
Dib.	3/12			
Rev.				
Apr.				
Esc: 1:2	<p>Volúmenes</p> <p>Pieza para colgado</p>			
Toler. 0,25mm Rug.				



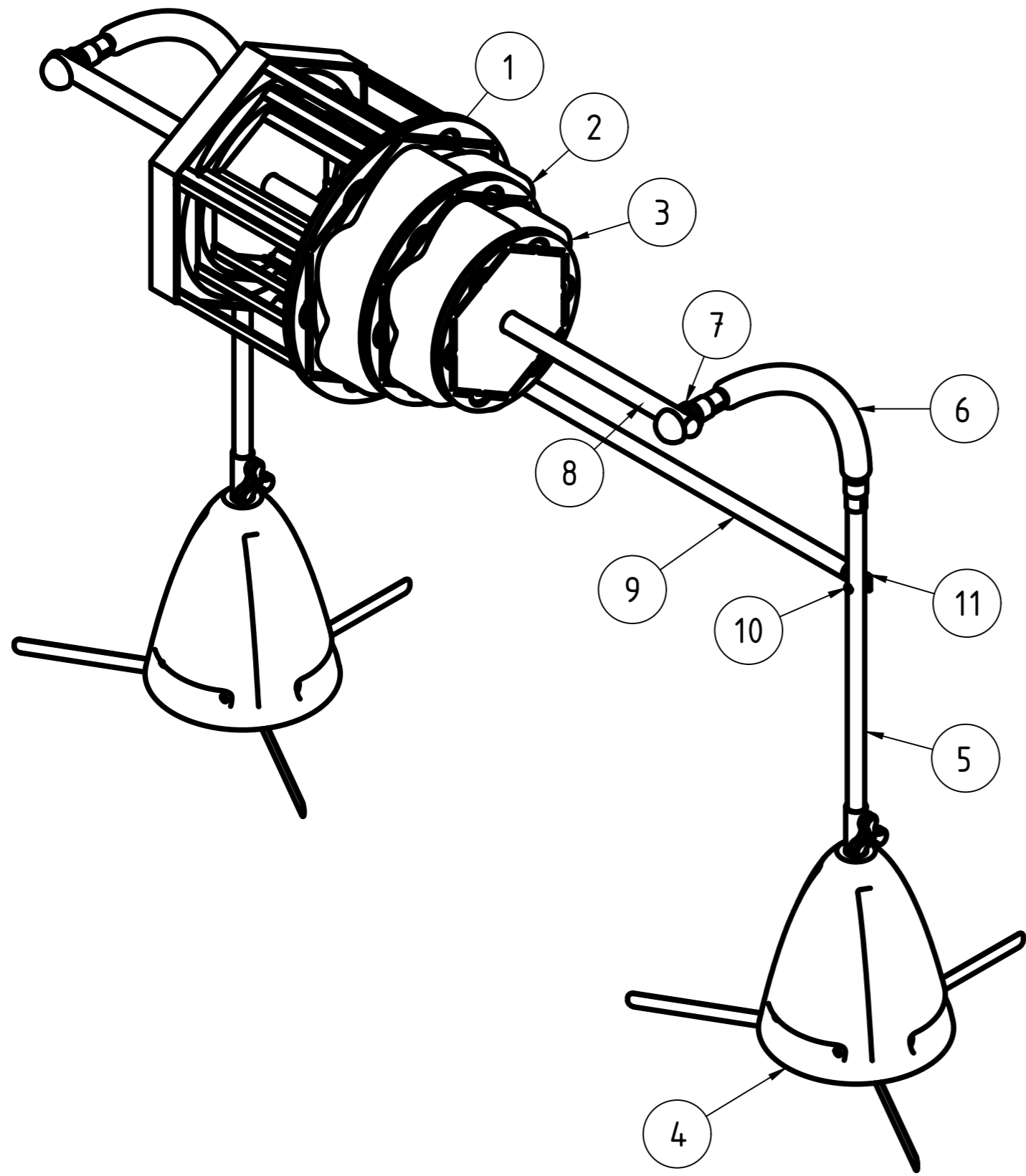
B-B (1:2)



	Fecha	Nombre	Taller de Diseño Industrial IV	
Dib.	3/12			
Rev.				
Apr.				
Esc: 1:2	<p style="text-align: center;">Volúmenes Pieza para enroscado</p>			
Toler. 0,25mm Rug.				

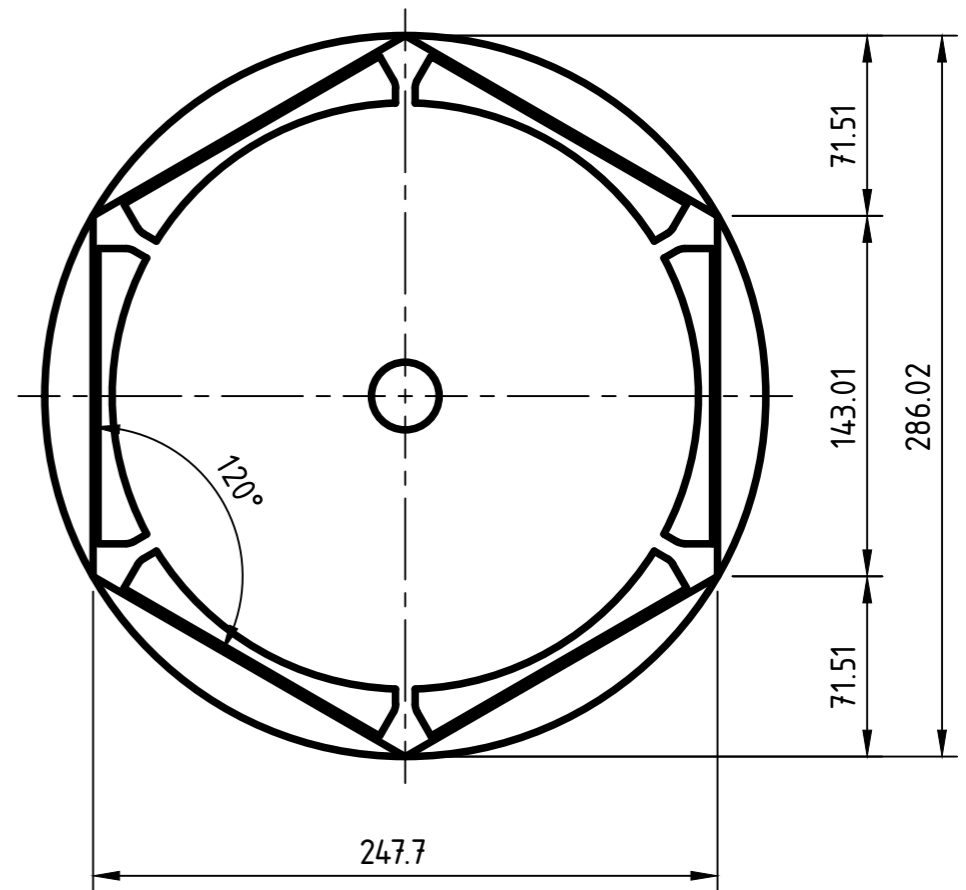
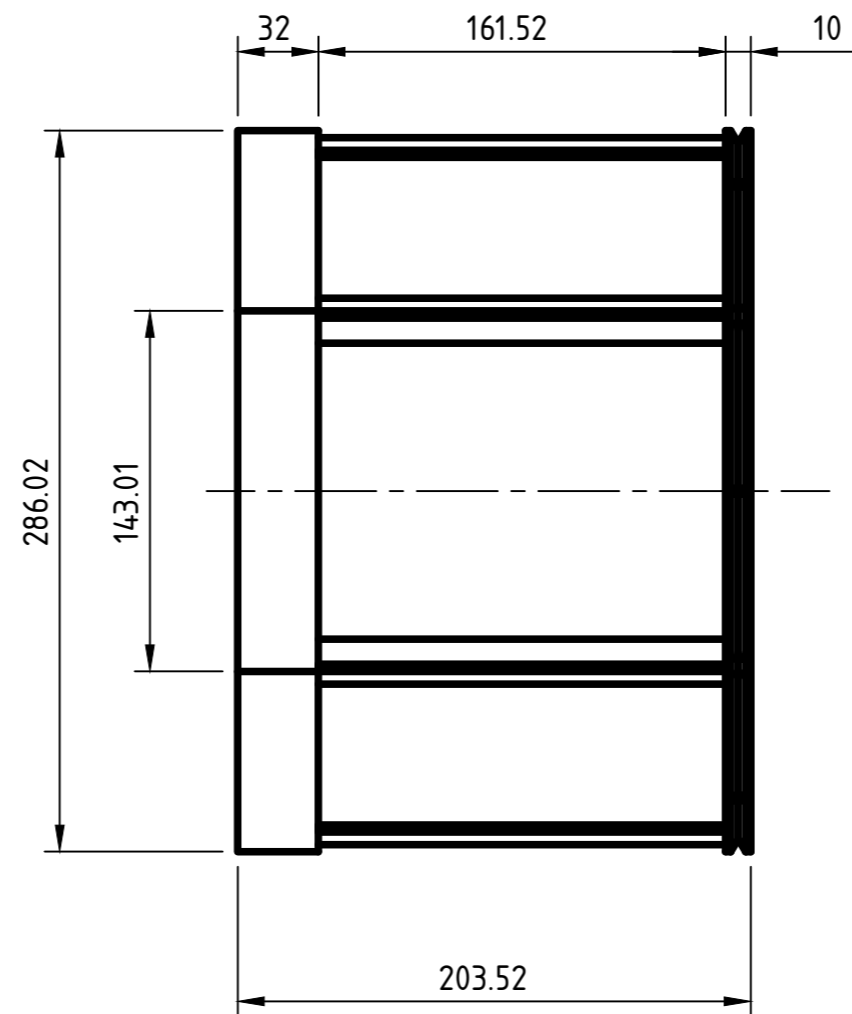
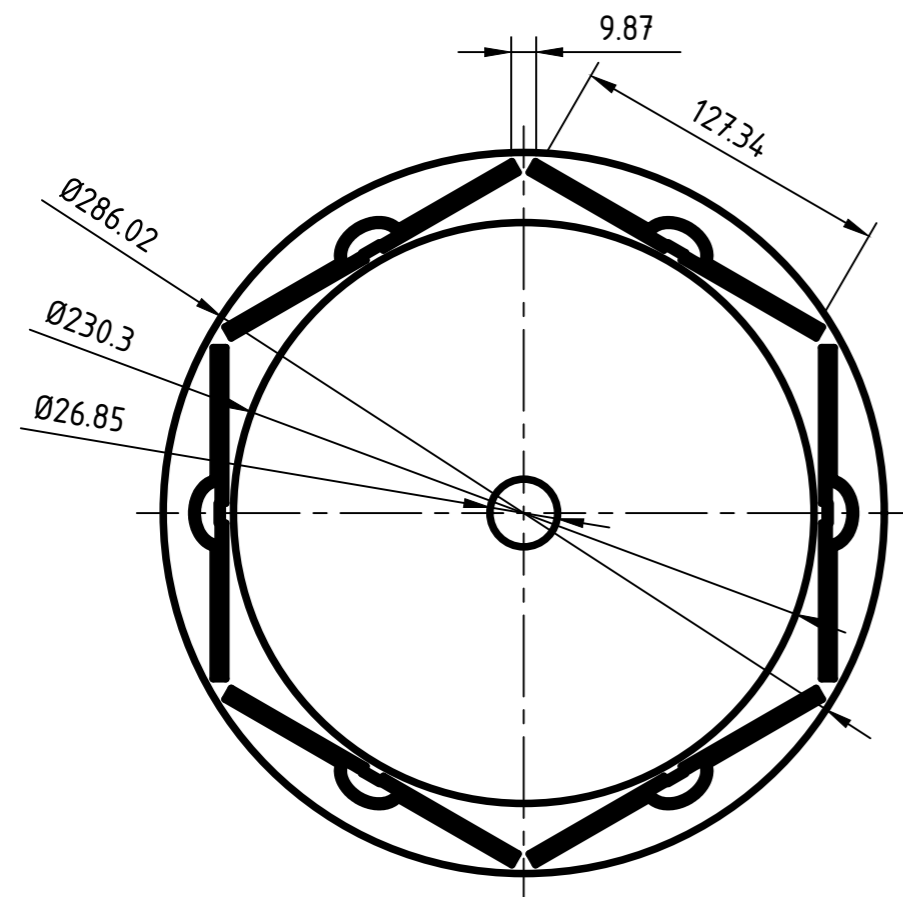


	Fecha	Nombre	Taller de Diseño Industrial IV	 <i>experiencia de juego creativo</i>
Dib.	3/12			
Rev.				
Apr.				
Esc:1:10	<p style="text-align: center;">Visualizador Dimensiones generales</p>			
				
Toler. Rug.				

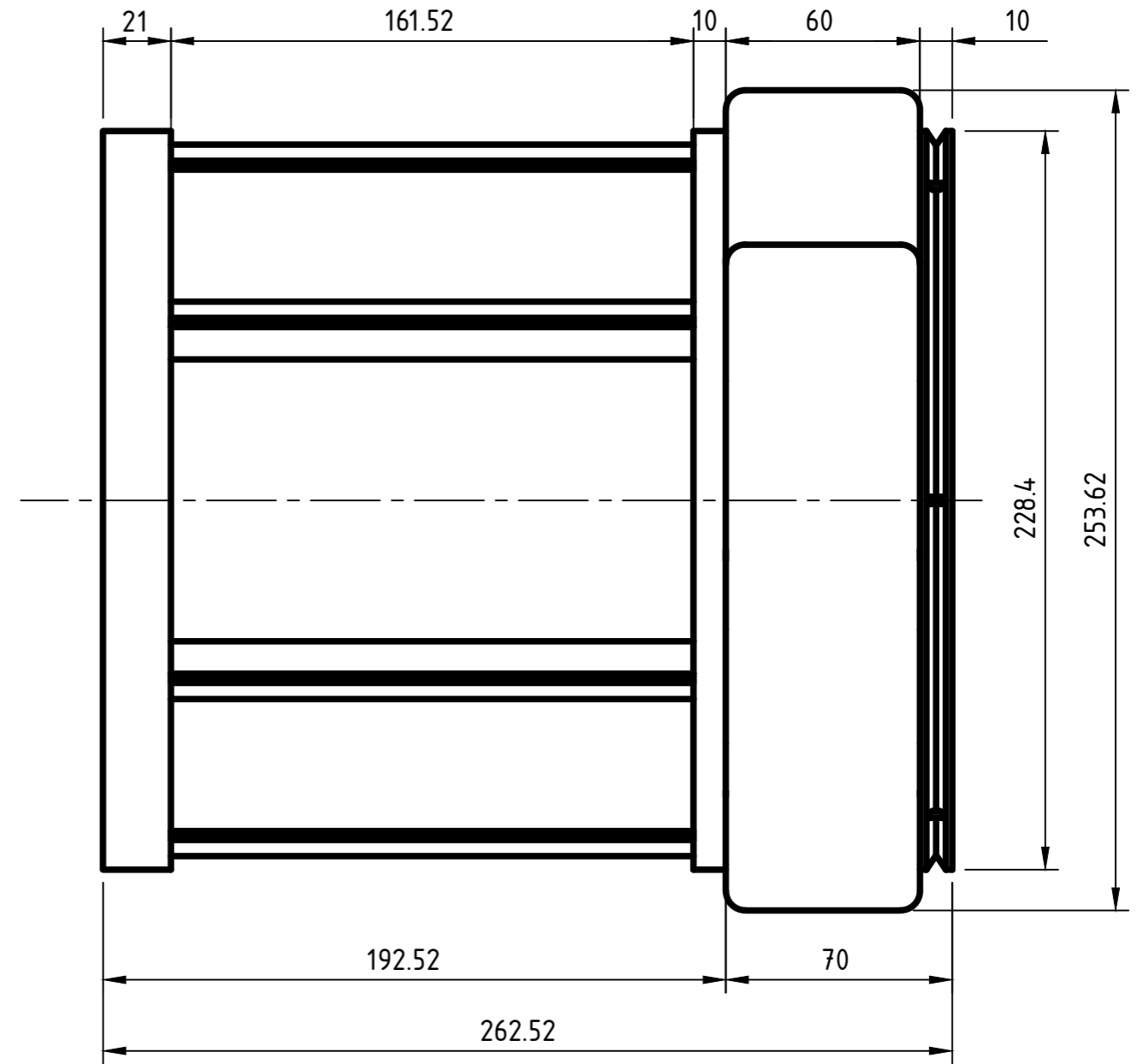
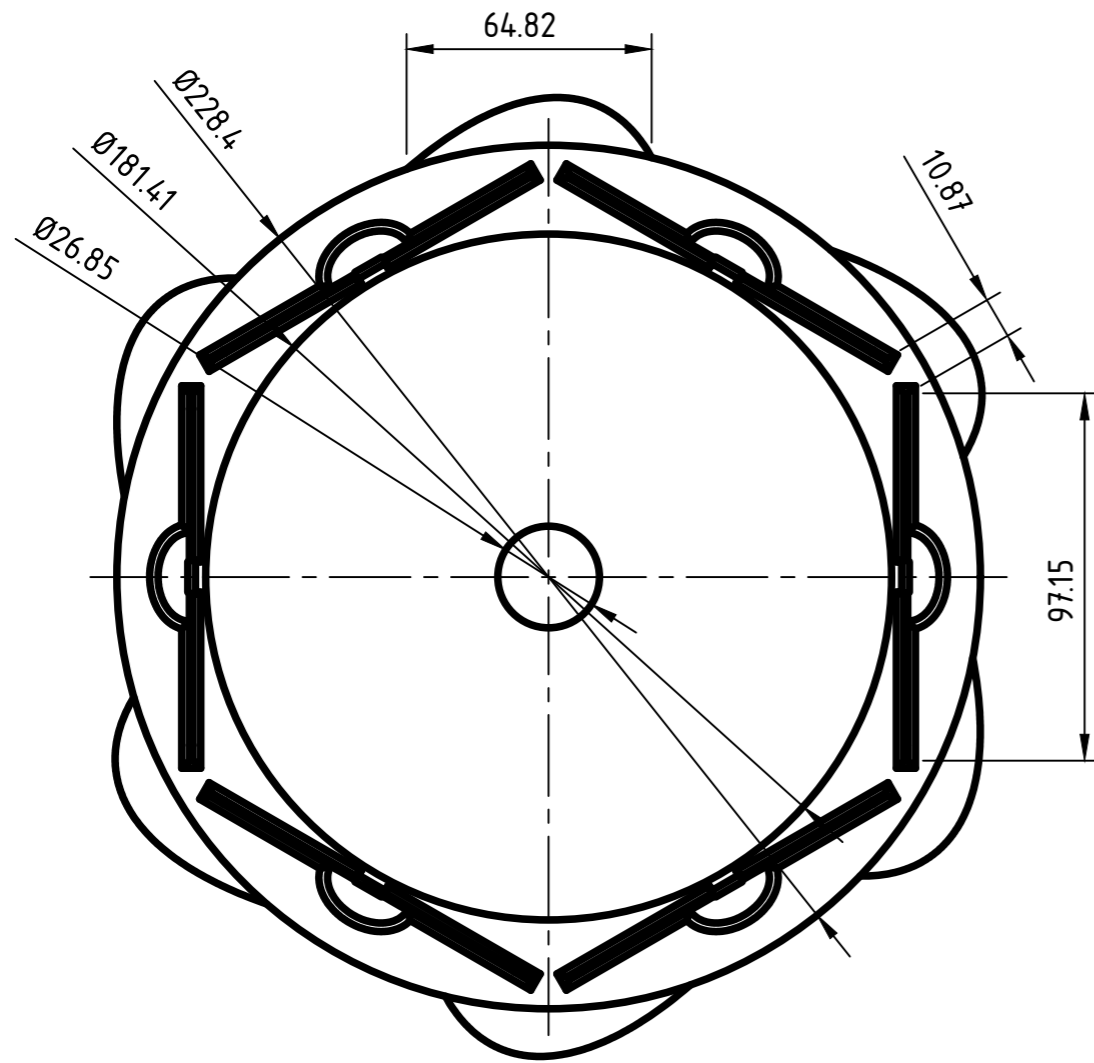


1	Pieza mayor	1	PLA	Impresión 3D FDM
1	Pieza media	2	PLA	Impresión 3D FDM
1	Pieza menor	3	PLA	Impresión 3D FDM
2	Base estructural	4		
2	Caño metálico	5	Acero galvanizado	Corte y taladrado
2	Brazo corrugado flexible metálico	6	Acero recubierto con EVA	Corte y adhesión
2	Tuerca M 16	7	Acero	
1	Eje	8	Acero galvanizado	Corte y taladrado
1	Cierre de estructura	9	Acero galvanizado	Corte y taladrado
2	Tornillo T 3 x 18, A4t	10	Acero	
2	Tuerca M3	11	Acero	
Cant		Ubicación	Material	Proceso

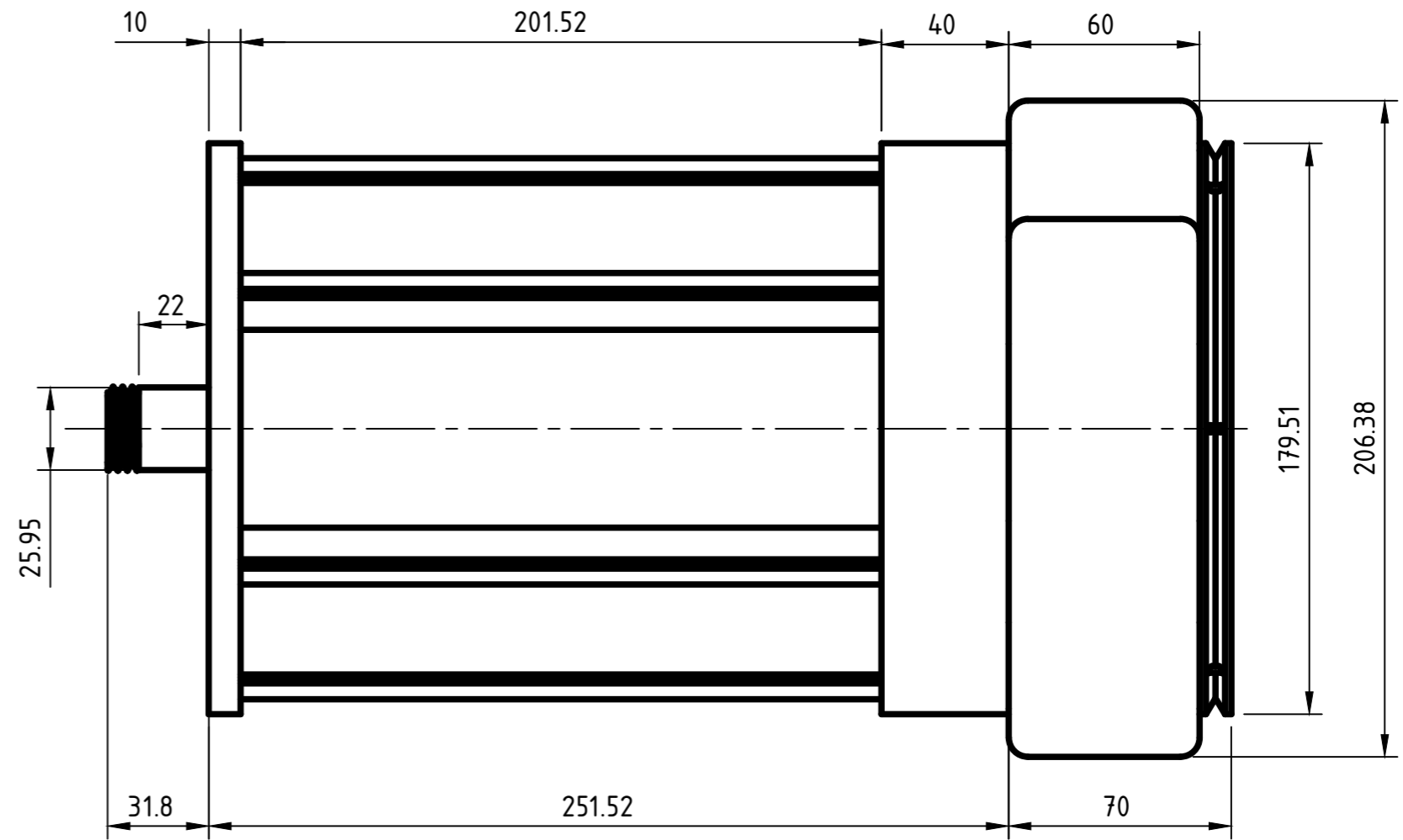
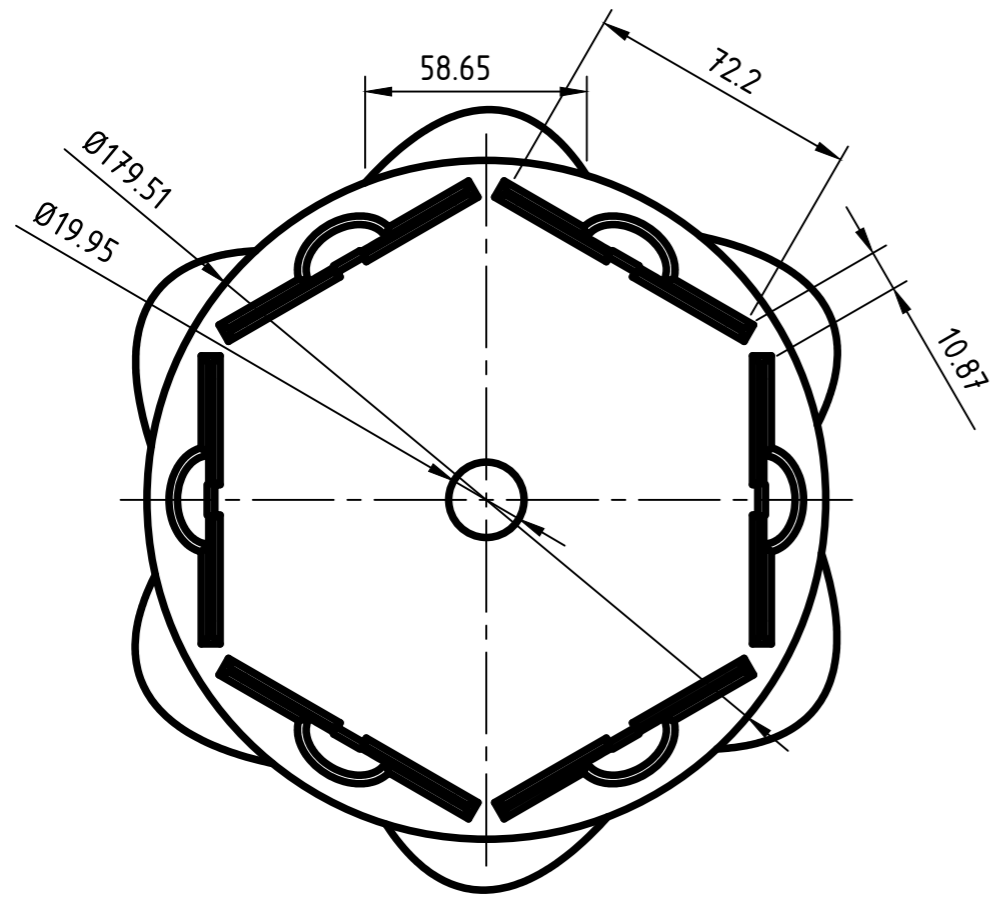
Dib.	Fecha	Nombre	Taller de Diseño Industrial IV	
Rev.	3/12			
Apr.				
Esc:1:3				
	Visualizador Partes			



Dib.	Fecha	Nombre	Taller de Diseño Industrial IV	 <i>ludi</i> experiencia de juego creativo
Rev.	3/12			
Apr.				
Esc: 1:3			Visualizador Pieza mayor	
 Toler. 0,25mm Rug.				

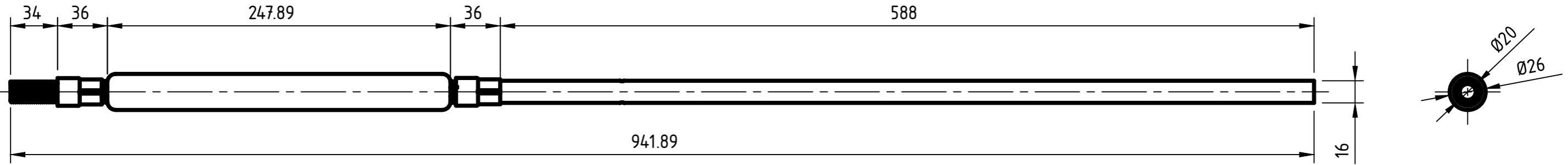


	Fecha	Nombre	Taller de Diseño Industrial IV	 <i>experiencia de juego creativo</i>
Dib.	3/12			
Rev.				
Apr.				
Esc: 1:2			Visualizador Pieza media	
				
Toler. 0,25mm Rug.				

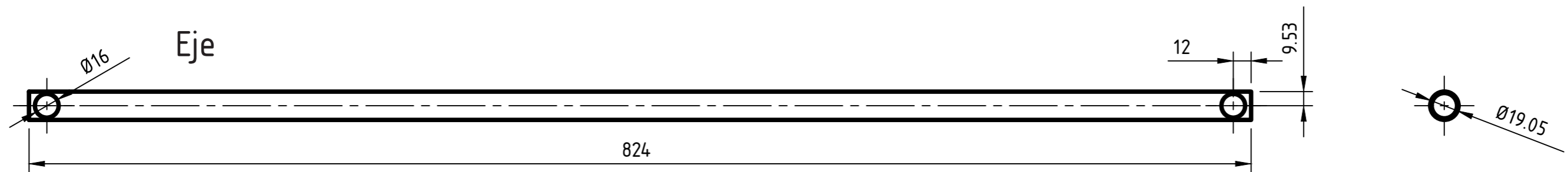


	Fecha	Nombre	Taller de Diseño Industrial IV	 <i>experiencia de juego creativo</i>
Dib.	3/12			
Rev.				
Apr.				
Esc: 1:2			Visualizador Pieza menor	
				
Toler. 0,25mm Rug.				

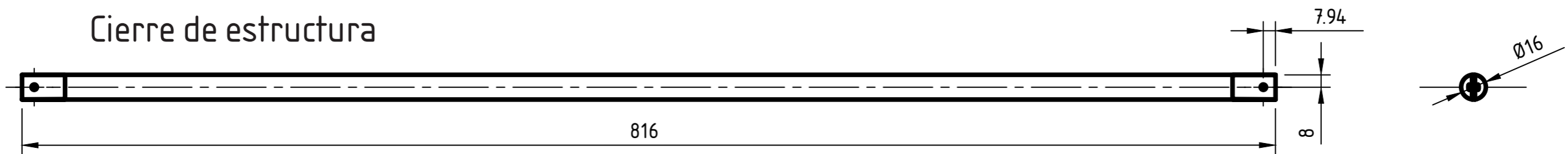
Caño estructural vertical



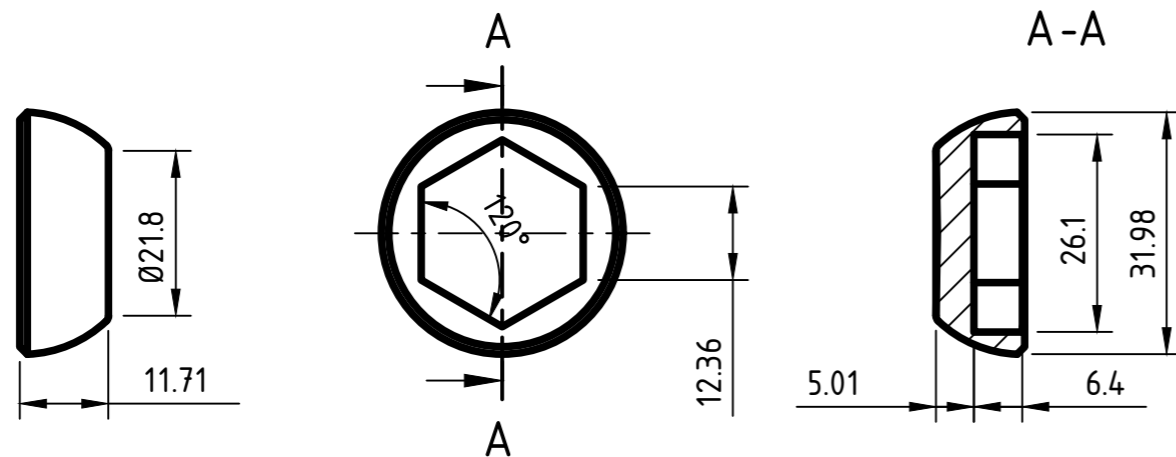
Eje



Cierre de estructura



Embellecedor para tuerca (1:1)



Dib.	Fecha	Nombre	Taller de Diseño Industrial IV	 <i>experiencia de juego creativo</i>
Rev.	3/12			
Apr.			Visualizador Piezas estructurales	
Esc: 1:3				
 Toler. 0,25mm Rug.				